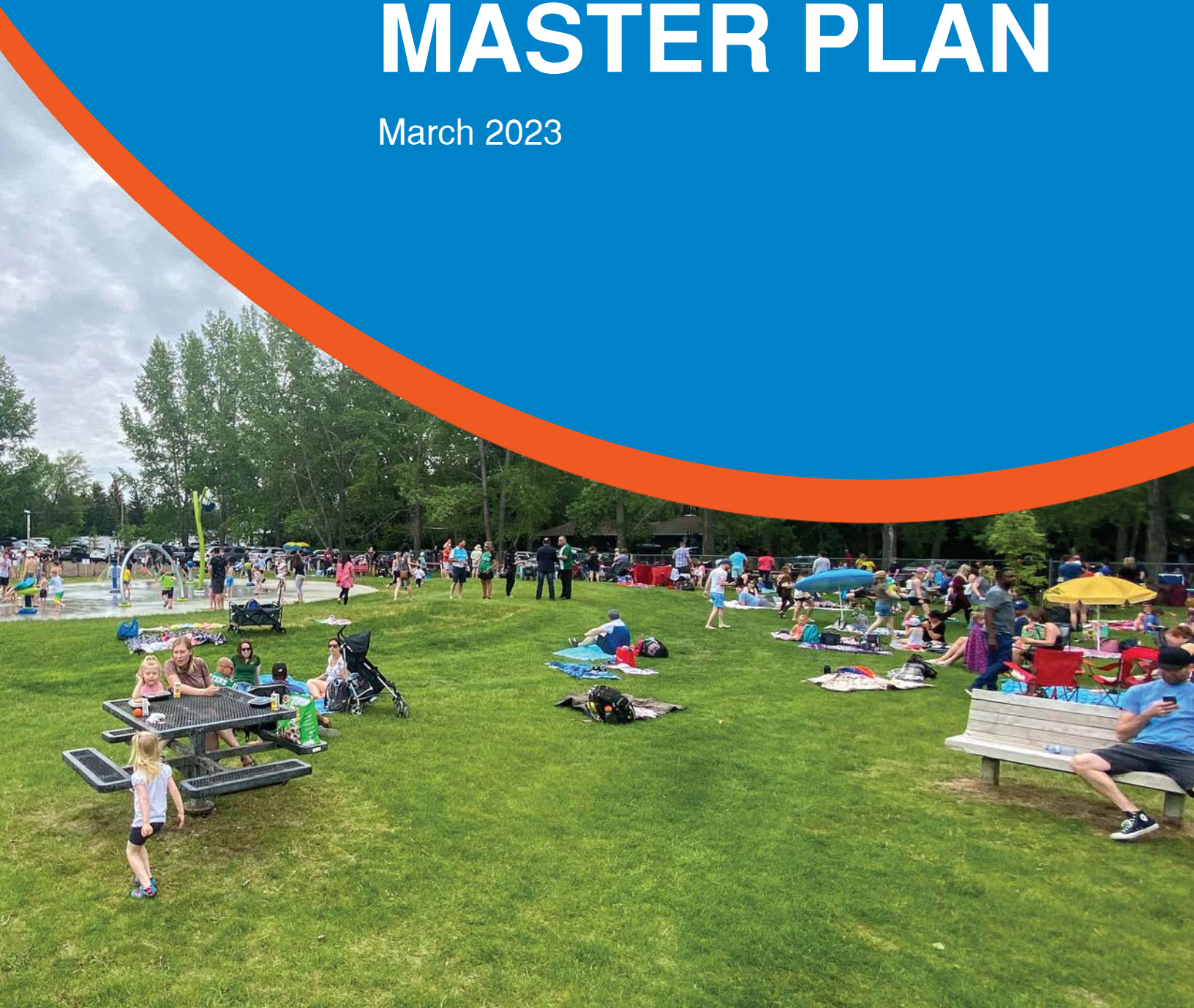




Town of White City

PARKS AND RECREATION MASTER PLAN

March 2023

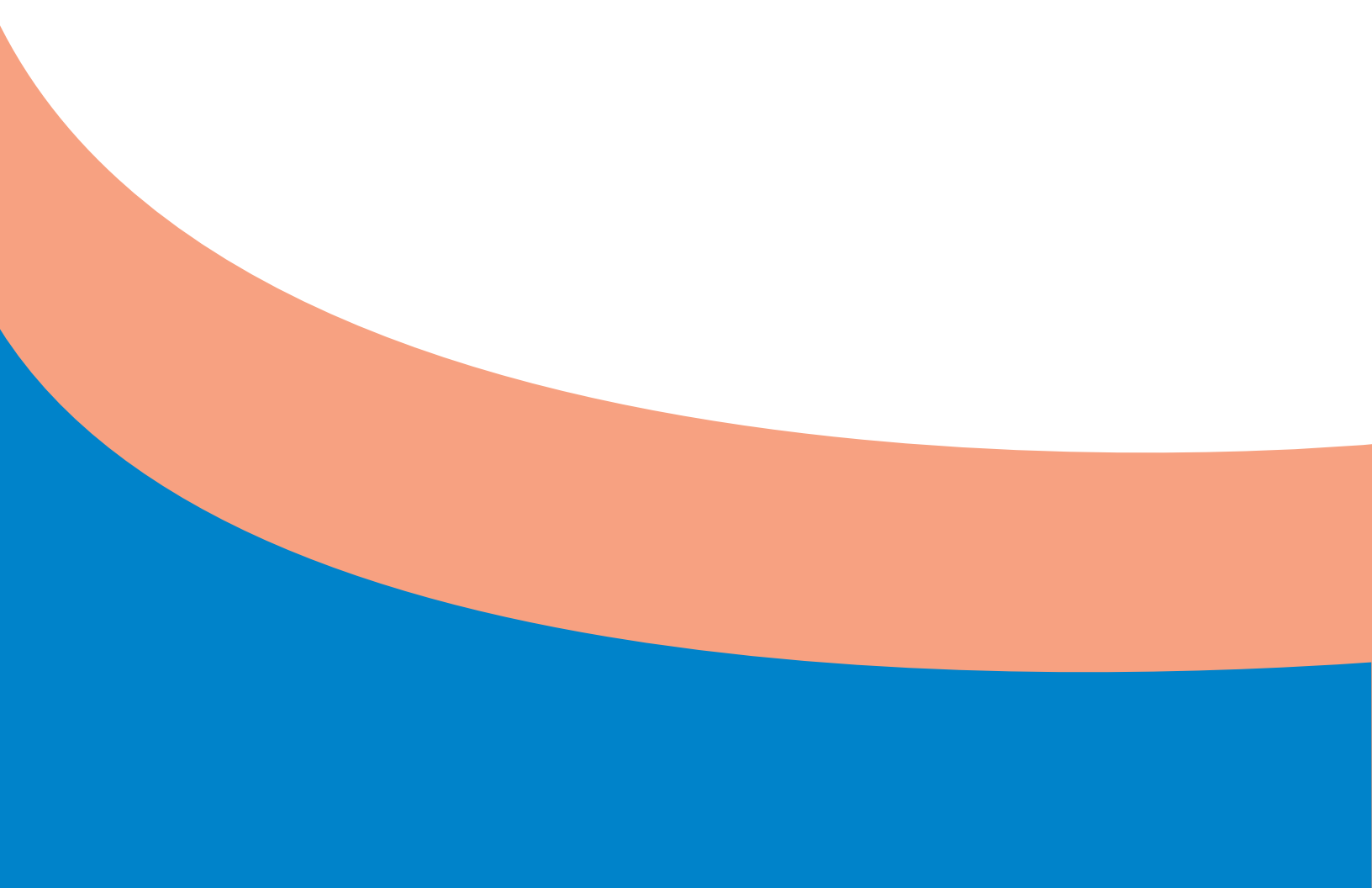


Town of White City

14 Ramm Ave E
White City
SK S4L 5B1

Urban Systems Ltd.

1090 Homer Street #550
Vancouver,
BC V6B 2W9



CONTENTS

Executive Summary	i
-------------------	---

1. INTRODUCTION IV

1.1	Community Description	1
1.2	Purpose of the Plan	2
1.3	Context	3
1.4	Planning Process	9

2. COMMUNITY PROFILE 10

2.1	Population	11
2.2	Age Distribution	12
2.3	Employment and Income	13
2.4	Racialized Population and Indigenous Identity Population	14
2.5	Implications for the PRMP	14
2.6	Highlights of Community Input	15

3. GUIDING STATEMENTS 18

3.1	Vision	19
3.2	Objectives	19

4. PARKS 20

4.1	Park Types	21
4.2	Parkland Supply and Distribution	24
4.3	Park Analysis	25
4.4	Amenities Analysis	30
4.5	Sports Field Analysis	33
4.6	Summary Analysis	36
4.7	Recommendations for Parks	38

5. TRAILS 42

5.1	Trail Overview and Types	43
5.2	Summary Analysis	46
5.3	Recommendations for Trails	46

6. RECREATION PROGRAMS AND EVENTS 50

6.1	Description	51
6.2	Summary Analysis	53
6.3	Recommendations for Programs and Events	54

7. IMPLEMENTATION 56

7.1	Implementation Table	57
7.2	Next Steps	58

APPENDIX A: COMMUNITY ENGAGEMENT

Community Survey	61
Workshops	70

Appendix B: Implementation Table

Implementation Table	81
----------------------	----

MAPS

- Map 1: Existing Parks and Trails
- Map 2: Spatial Distribution Analysis
- Map 3: Existing and Proposed Parks and Trails

EXECUTIVE SUMMARY

Context and Purpose

Given the growth rate and current lack of a plan for parks and outdoor recreation, the Town of White City has prioritized the preparation of a clear and comprehensive Parks and Recreation Master Plan (PRMP). This plan consolidates a variety of related plans and policies in one document, includes community input, and provides an achievable long-term plan for the Town's parks, trails, and recreation services. This will help to improve the quality of life for existing and future residents of the Town and the region.

Community Engagement

A community survey and online workshops were used to collect input on participation and satisfaction with existing facilities and activities, as well as priorities for the future.

Vision and Objectives

Vision

Parks, trails, and recreation in White City are accessible, inclusive, and safe, meeting the needs of all residents, and supporting active lifestyles and social connections, in a sustainable manner that is integrated with the region.

Objectives

- Promote a healthy and active community with year-round outdoor and indoor recreation opportunities
- Provide inclusive and welcoming access to recreation opportunities for everyone
- Enhance access to and connectivity of trails
- Enhance existing parks with new and improved amenities
- Support more opportunities for gatherings and events
- Increase programming opportunities for all ages and abilities
- Plan for complementary and innovative amenities in the new Town Centre







Key Recommendations

The following is a high-level overview of the key recommendations:

Parks

- Ensure that appropriate open spaces for parks and recreation facilities are dedicated throughout the community during the subdivision process per the OCP
- Conduct upgrades to the following parks: Serbu Park, Splash Park, Fernwood Park, Wheatland Park, Aspen Park, Hummingbird Park, and Emerald Ridge Park

Trails

- Conduct a wayfinding strategy that includes a signage system for wayfinding, regulatory, and interpretive signs for parks, trails, and facilities
- Continue to develop pathways proposed in the Multi-Use Pathway Network Improvement Project
- Add trails to improve the connectivity of Splash Park to existing trails and other parks

Recreation Programs and Events

- Increase programs offered, with a focus on fitness, arts and culture, seniors, youth, sports for girls, and multi-age concurrent programs with child care
- Encourage more volunteerism
- Provide more information on programs and events through multiple online and traditional channels

Implementation Plan and Next Steps

The implementation plan identifies the proposed phasing. Next steps address the collaboration, budgeting, and processes that will be used to implement the recommendations.

The PRMP will be implemented in phases based on community needs, the pace of development, funding opportunities, and Council's priorities as all of those evolve over time. The PRMP is a guiding document for the provision of facilities and services; it does not commit the Town to any project nor limit future opportunities. Recommendations will need to be confirmed and implemented through capital funding, grants, development contributions, and effective partnerships on an ongoing basis. The most important guidance is provided by the vision and objectives, which should be used to guide future decisions.



1

INTRODUCTION

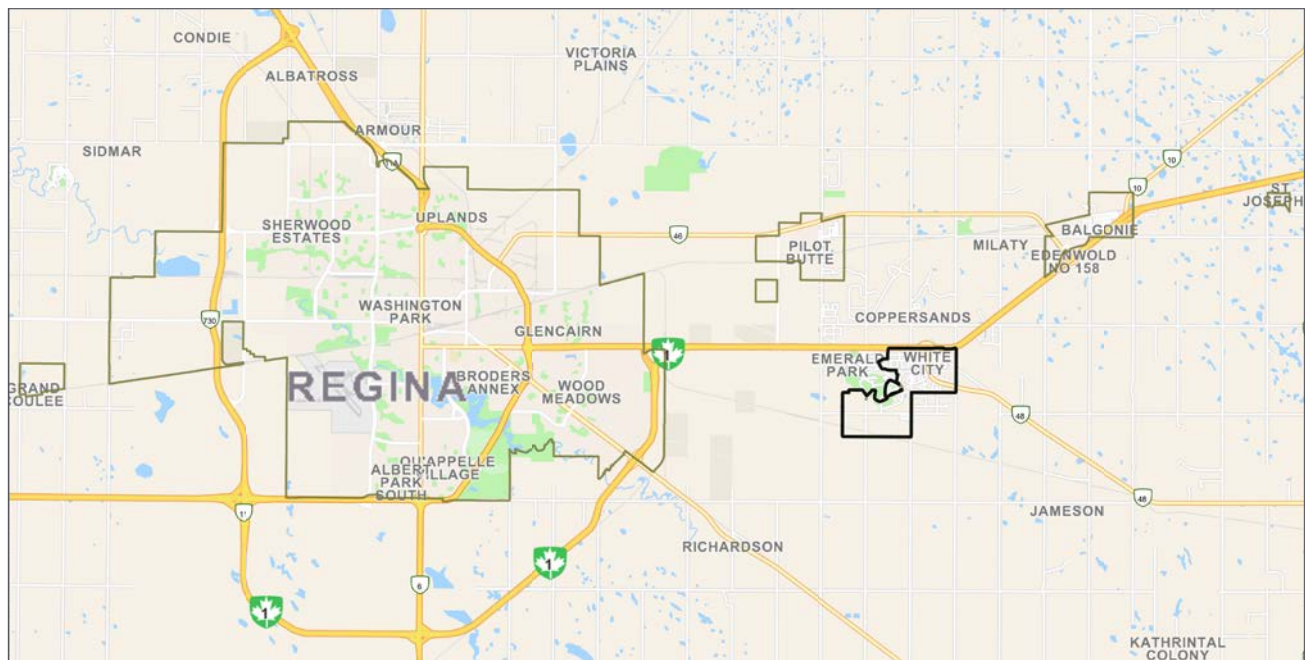
1.1 COMMUNITY DESCRIPTION

White City is located on Treaty 4 territory, the original lands of the Cree, Ojibwe, Saulteaux, Dakota, Nakota, and Lakota, and on the homeland of the Métis Nation.

The Town of White City is a fast-growing community located approximately 10 kilometres (km) east of the City of Regina along Highway 1 (Figure 1.1). It forms part of the White Butte area, which is a partnership of the Regional Municipality (RM) of Edenwold No. 158, Pilot Butte, Balgonie, and the Village of Edenwold. The Town's neighbouring community, Emerald Park, is contiguous with White City, and many residents are unaware of the specific location of the border between them. The RM of Edenwold is working on a Parks and Recreation Master Plan for lands within their jurisdiction.

The towns of Balgonie and Pilot Butte are within a 10-minute drive from White City. Facilities like Balgonie's high school and outdoor swimming pool are used by White City's residents.

Figure 1.1: White City Regional Context



White City had a population of 3,821 people in 2021 (Statistics Canada Census). Since 2006, its population has more than tripled, and it is considered one of the fastest-growing communities in the province with a primarily family-oriented demographic.

White City's population is comprised of predominantly young families, including many who have recently moved to the community. Housing in White City is considerably more affordable than in Regina, which makes it an attractive place for those looking to relocate to a small community, while having all the amenities and services that Regina has to offer only a short drive away.

The Town's housing is dominated by single family dwellings, accounting for more than 95 percent of all development in the Town. Most of the residents that live in Town work and shop in Regina or other neighbouring communities.

Initially, the Town was developed as a residential subdivision and allowed urban dwellers to enjoy country living on small acreages. Now, the Town's growth has reached a point where there is demand for local services, such as commercial, alternative residential, parks, and recreation facilities, closer to residents.

White City's Town Centre Neighbourhood Plan (in combination with the 2022-2025 Strategic Plan) was designed to guide the vision of planned and managed growth to provide peaceful living with high quality, affordable, family-oriented services, and wide open spaces. It identifies Chuka Creek as an integral part of the green space for this new development, and proposes the construction of a new Multi-use Recreation Centre.

Given the growth rate and current lack of a plan for parks and outdoor recreation, the Town prioritized the preparation of a clear and comprehensive Parks and Recreation Master Plan (PRMP). The plan consolidates a variety of related plans and policies in one document, includes community input, and provides an achievable long-term plan for the Town's parks, trails, and recreation services. This will help to improve the quality of life for existing and future residents of the Town and the region.

1.2 PURPOSE OF THE PLAN

The PRMP will guide Town Council and staff on the planning, design, and decision-making related to parks, trails, programs, and events to best meet the needs of the community over the next five to ten years.

This project excludes the planning for future indoor recreation facilities since significant effort has already been undertaken in the planning for a new Multi-use Recreation Centre.



1.3 CONTEXT

The following are the key documents that provide context and direction for the PRMP.

Official Community Plan

The 2014 Official Community Plan (OCP) (consolidated to January 2020) is based on the following vision:

The Town of White City's vision is to plan and manage growth to provide peaceful living with high quality, affordable, family-oriented services and wide open spaces. Small town atmosphere with big city amenities is what community living should be – meeting the needs and enhancing the quality of life for all.

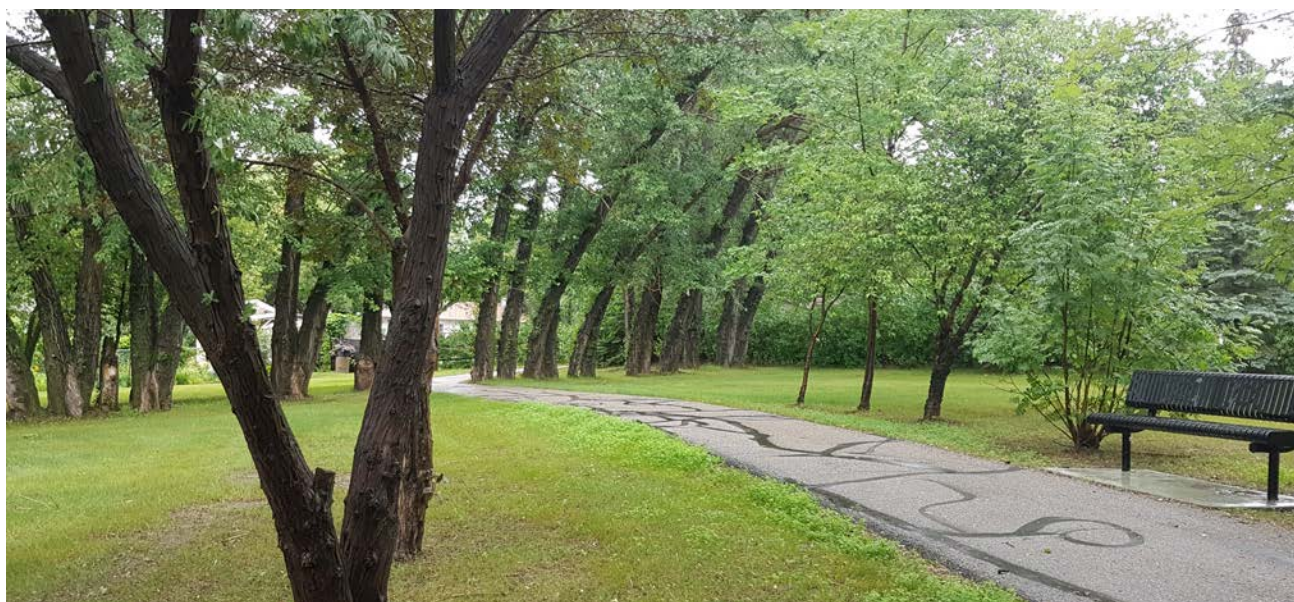
The following are some of the key strategies and policies that are relevant to the PRMP.

Directing Growth

Growth management issues are closely tied to environmental protection and the preservation of important and unique natural features. Without a long-term plan to focus urban development, new areas of the Town are under pressure for uses such as residential subdivisions, rural lots, and commercial development, and such uses can hinder the protection of potentially sensitive areas. Sustainable and responsible growth is the goal of this Official Community Plan and the goal of the community.

Natural Areas; Public Open Spaces

Protect the natural amenities of the Town by retaining valuable green areas such as a ravine, coulee, swamp, and natural drainage course or creek bed as environmental reserves pursuant to provincial regulations. Ensure the provision of 10 percent of the land area proposed for residential development and 5 percent of the land for non-residential development as municipal reserve, and ensure the said lands are meaningful spaces for the enjoyment of the general public.



Crime Prevention Through Environmental Design (CPTED)

The Official Community Plan encourages safe and sustainable development by ensuring the principles of CPTED are met in any new development and enterprise within the Town of White City:

- **Territorially:** promote and support places for which the user identifies with and takes ownership, making it less attractive to criminal activity.
- **Natural Surveillance:** encourage development design that provides “eyes on the streets” to deter potential crime.
- **Access Control:** facilitate the creation of places that promote a sense of ownership for legitimate users by focusing on formal and informal entry and exit points.
- **Image:** recognize the link between the appearance of a place and how this is instrumental in creating a sense of belonging, and how a place's appearance may invite or deter criminal activity.
- **Conflicting User Groups:** endeavours to ensure end use compatibility during the planning and/or review process for new and existing development.
- **Activity Support:** ensure the use and promotion of places that otherwise may become locations with the potential for criminal activity.
- **Crime Generators:** verify that activity nodes do not increase the opportunity for crime or reduce the perception of safety in the area.
- **Land Use Mix:** ensure the careful consideration of land uses within the Town and within specific developments to reduce the opportunity for crime and increase the feeling of safety.
- **Movement Predictors:** provide and encourage the creation of routes, trails and pathways that do not provide potential attackers with places to lie in wait for people on a certain trail.
- **Displacement:** identify and implement tools to support the positive displacement of potential criminal activity.
- **Cohesion:** support and encourage the creation of strong relationships and interactions between all users of a place to support and maintain a sense of safety.
- **Connectivity:** design a non-isolated community and places by ensuring the proper pathways and road connections are provided.
- **Capacity:** accommodate the right balance of uses with a full range of services which reduces the opportunity for crime.
- **Culture:** promote and encourage a friendly and lively community and Town Centre designed to bring people together and enhance social cohesion.

Environmental Responsibility and Stewardship

The Town promotes and encourages growth in locations and in forms that safeguards watercourses, woodlands, wetlands, and natural habitat and which increases walkability in the community. New development proposals may require an environmental impact assessment. Decisions shall be made in accordance with the recommendations of the assessments and in compliance with the Official Community Plan.

Community Service Policies

The following are excerpts relevant to the PRMP:

- Examine the feasibility of expanding and varying the types of recreational programs and facilities in the community from time to time.
- Inter-municipal partnerships are encouraged to provide for regional open spaces, leisure, and tourism opportunities and as a method of reducing cost.
- Work towards promoting meaningful parks within a five-minute walking distance, recognizing the topography of the area, for the majority of residents of the community.
- Provide for adequate links between residential areas, neighbourhood commercial areas, schools, parks, and community facilities by a network of trails and walkways.
- Design parks and public facilities to include amenities for various age groups that encourage active use at various times of the day.
- Encourage public and private partnerships and other mechanisms to contribute to the expansion and provision of additional parks, recreation, and cultural amenities.
- Ensure that dedicated municipal reserve lands provide a valuable and usable space for the enjoyment of the community and ensure the dedication of watercourses and areas of similar nature as environmental reserves.
- The Town of White City will endeavour to develop a Trail System Master Plan to guide the expansion and improvement of the existing trail network by linking destinations in the Town and providing access to all residents for a variety of non-motorized recreational uses.

For more information please visit: <https://whitecity.ca/p/official-community-plan>





For more information
please visit: [https://
whitecity.ca/p/strategic-plan](https://whitecity.ca/p/strategic-plan)

White City Strategic Plan (2022-2025)

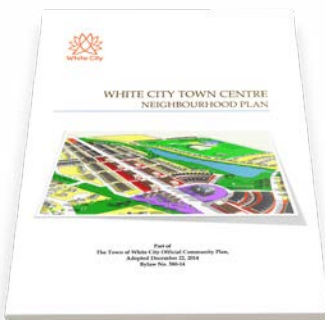
The Strategic Plan is the framework that is intended to guide Council and Administration in the decision-making and forward progress of the Town of White City (the Town) and direct resources where they are needed over this term of Council.

The vision of the plan is:

“Small town feel with active lifestyle appeal. A vibrant growing community that provides a safe, inclusive, and innovative environment where everyone thrives”

Projects related to parks, trails, and recreation include the following:

- Increase programming opportunities for all ages and abilities for the development of physical and mental well-being.
- Develop new municipal facilities that offer opportunities for a variety of activities for all ages.
- Natural public spaces are available throughout White City providing opportunities to connect with and enjoy nature and play.
- Continuation of the Multi-Use Pathway Improvement Project.
- Work with the community to develop a plan that addresses recreational opportunities to meet the needs of a growing community



For more information
please visit: [https://
whitecity.ca/p/discover-
town-centre](https://whitecity.ca/p/discover-town-centre)

Town Centre Neighbourhood Plan

With the purpose of facilitating development and planned growth, the Town of White City proposes the Town Centre Neighbourhood Plan to create a “Heart of the Community” space at the Betteridge Road and Emerald Park Road Intersection. The proposed Town Centre Neighbourhood Plan area is located in the southwest of White City. The lands are bounded to the north by the Enbridge Pipeline right-of way and to the south by Chuka Creek. The lands to the west are agricultural and currently outside of the Town's boundary.

The Town Centre will offer a central location for future development housing professional services, retail, residential, office, entertainment, food and beverage services, grocery, and arts and cultural facilities in a small-town neighbourly style. It will incorporate wide sidewalks suitable for outdoor patios, walking paths, green spaces, parks, and pond features along Chuka Creek.

Chuka Creek to the south represents a natural constraint to the flow of development. However, it also represents a great opportunity for potential development as accessible green space and recreation amenities adjacent to the neighbourhood, and it will help to achieve the maximum social, economic, and environmental benefits of the area.

New Multi-use Recreation Centre

Previous community surveys have indicated a lack of indoor recreation opportunities. There is a community desire to see additional facilities developed to support recreation and sports in White City. In response to this community need, the Town of White City has been working to develop a multi-use recreation centre plan for the new Town Centre. The new recreation centre is intended to create a community hub for sports, recreation, and culture.

The planning process for this new centre started with the approval of a feasibility study in 2018. Following the award of the project, the public was engaged (through community consultation, design charette, and open house) between late 2018 and early 2019. In March 2019, the Multi-Use Recreation Centre Feasibility Study was presented to White City Town Council, and land negotiations began in May 2019. In June 2019, a fundraising feasibility study to form part of the centre business case was initiated and the public, stakeholders, and neighbouring municipalities were consulted. In October 2019, the Schematic Design (Phase Two) was approved by Town Council. Between April and June 2021, two more rounds of public engagement took place.

The current plan for the Multi-Use Recreation Centre includes ice arenas, fieldhouse, gymnasiums, library, child care centre, aquatics centre, and much more.



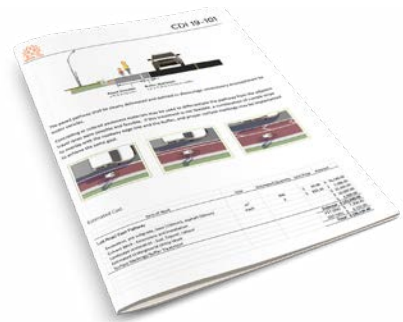
<https://whitecity.ca/p/multi-use-recreation-centre>



Multi-Use Pathway Network Improvement Project

In 2015, the Town commissioned a Traffic Study to help achieve the goal of improving pedestrian safety. The Traffic Study included a review of the Town's pathway system, and the Town subsequently implemented the Multi-Use Pathway Network Improvement Project in 2019 to improve pedestrian safety in the community. This project aims to address multi-use pathway gaps and enhance pedestrian accessibility and mobility on existing streets that lack adequate infrastructure. More details on the plan are included in section 5.

For more information please visit: <https://whitecity.ca/p/multi-use-pathway-improvement-project>



White City Urban Forest Management Strategy

The White City Urban Forest Management Strategy (UFMS) provides a detailed and comprehensive plan for managing the urban forest in a way that meets industry standards while using a targeted, cost-effective approach. The 10-year strategy outlines the framework for changes to planning, regulation, education, and enforcement protocols associated with urban forest management.

The main urban forestry goals outlined in this document are:

- Manage and monitor trees for health and safety
- Plant suitable trees to grow the urban forest
- Enhance existing trees through improved maintenance and regulations
- Engage the community to respect, connect with, and invest in the urban forest

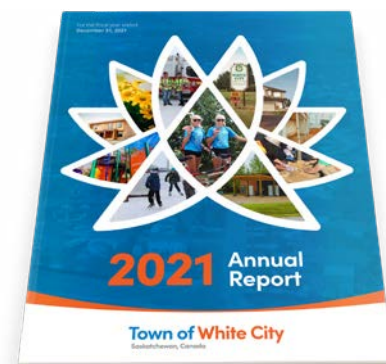
For more information please visit: <https://whitecity.ca/p/urban-forest-management-strategy>



White City 2021 Annual Report

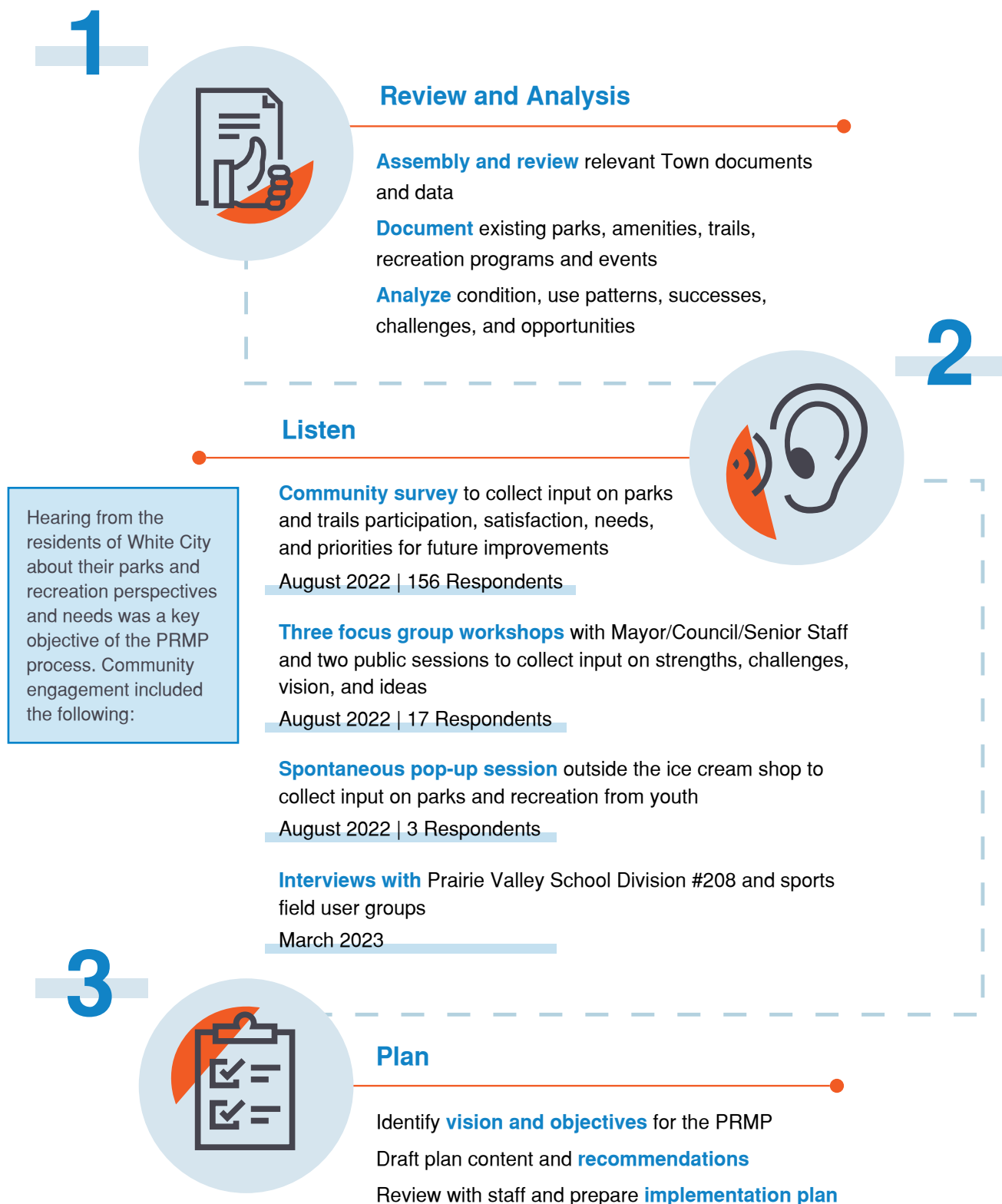
The 2021 Annual Report provides the final reporting on the 2017-2022 Strategic Plan. Overall, 52 percent of the plan was completed, 43 percent of the plan was carried forward to future years or as part of the general operations of White City, and 4 percent was not completed. In 2021, Council and administration worked together to develop the new 2022–2025 Strategic Plan for the community, and major projects include the Town Centre, Multi-Use Recreation Centre, and the WCRM158 Wastewater Management Authority. The financial section reports that White City continues to have a strong financial position with an accumulated surplus of \$39.5 million, healthy reserve funds, and a bright future ahead.

For more information please visit: <https://whitecity.ca/p/annual-reports>



1.4 PLANNING PROCESS

The planning process for the PRMP had three phases, as shown below





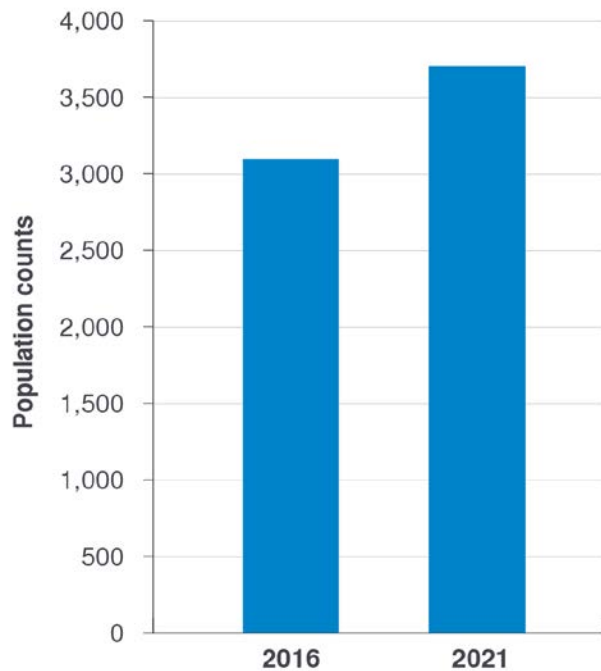
2

COMMUNITY PROFILE

2.1 POPULATION

Over the past 15 years, White City's population more than tripled and during the past five years it has continued to grow from 3,099 in 2016 to 3,821 in 2021 (Figure 2.1). The Town's OCP reports that over the years, growth has undergone fluctuations responding largely to economic forces in the region and that any growth projection or forecast will be dependent to a large degree on economic forces in the region and province.

Figure 2.1: White City Population Trends (2016-2021)

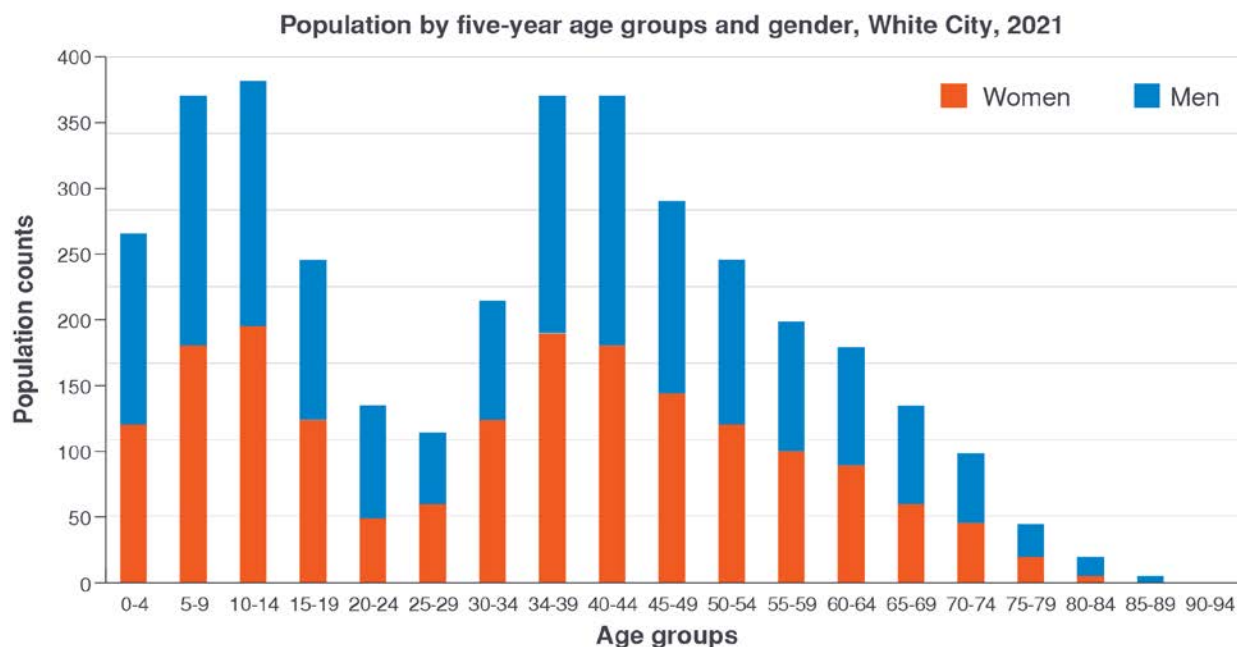


Source: Statistics Canada Census – Population and dwelling count amendments, 2021 Census
<https://www12.statcan.gc.ca/census-recensement/2021/ref/amendments-modifications-eng.cfm>

2.2 AGE DISTRIBUTION

Statistics Canada reports that, compared with the population profiles for Canada and Saskatchewan, the population of the Town has a higher proportion of children and youth 0 to 19 years old and adults 30 to 54 years old. There is also a lower proportion of residents aged 20 to 29 years old and over 60 years old (Figure 2.2). This greater representation of young families is typical of suburban communities with high rates of recent growth.

Figure 2.2: White City's Age Distribution



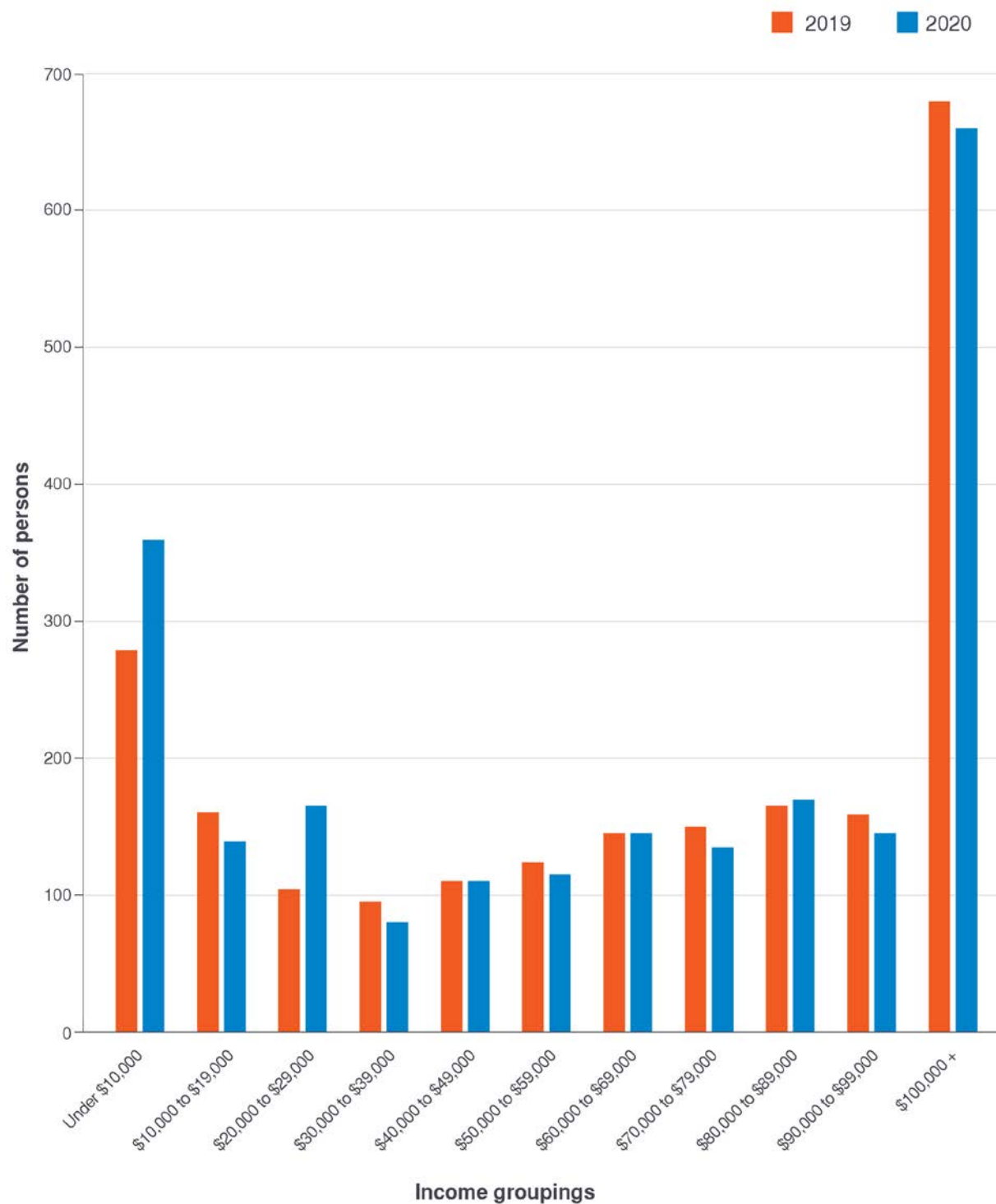
Source: Statistics Canada 2021 Census.



2.3 EMPLOYMENT AND INCOME

White City has a high percentage of households with a high median income (i.e., \$100,000 or more per year) (Figure 2.3).

Figure 2.3: Median Household Income Distribution White City



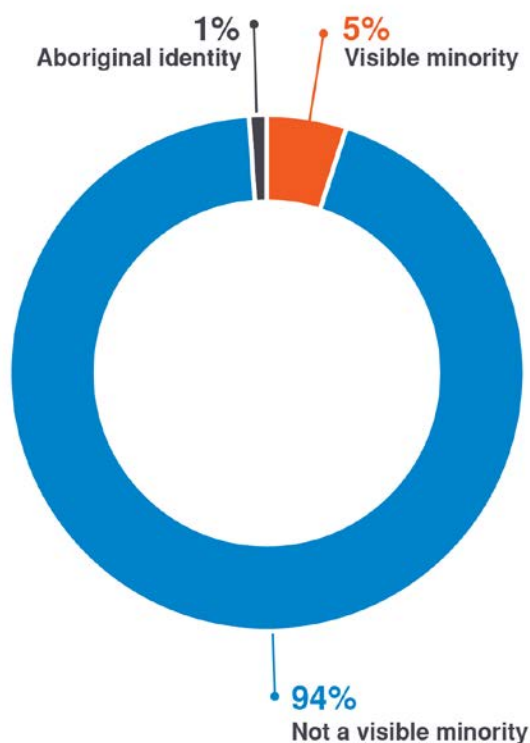
Source: Statistics Canada 2021 Census.

2.4 RACIALIZED POPULATION AND INDIGENOUS IDENTITY POPULATION

A very low percentage of the population in White City is part of a racialized population (7.8 percent of residents) or identifies as Indigenous population (160 residents) (Figure 2.4).

Source: Statistics Canada 2021 Census

Figure 2.4: Racialized Population and Indigenous Identity Population



2.5 IMPLICATIONS FOR THE PRMP

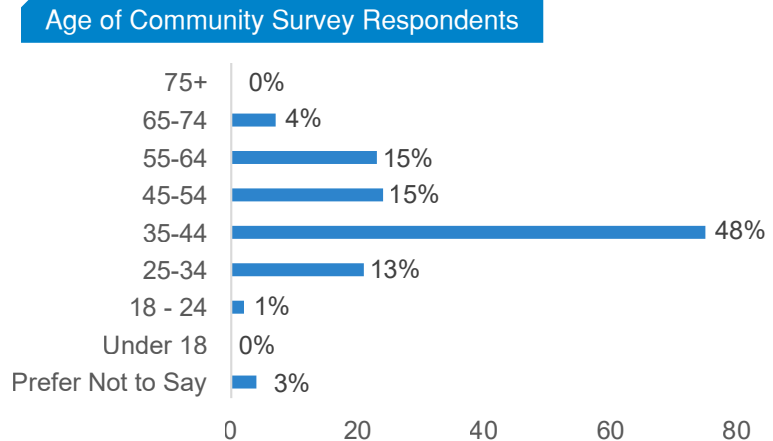
The following are the implications of the demographics in relation to the PRMP:

- It is important to offer park opportunities and recreation programs that are family-oriented, e.g., playgrounds close to activities for parents, or programs at concurrent times that can interest children and adults.
- It is important to create opportunities to engage youth and create a sense of belonging, to help retain young adults in the future, e.g., skate parks and looping trails attract youth.
- It is important to design parks and facilities that will continue to attract new residents, e.g., attractive parks and trails with trees, and trending amenities such as off-leash dog parks and pickleball courts.
- New parks and programs will be needed to accommodate growth, e.g., parks and recreation facilities offering fitness classes and programs in new development areas.
- The population has high expectations for recreation amenities, services, and maintenance so the quantity and quality of facilities need to be high.
- Affordability is not as important as it is in many other communities.

2.6 HIGHLIGHTS OF COMMUNITY INPUT

Community Survey

A community survey was used to collect input on participation and satisfaction with existing facilities and activities, as well as priorities for the future. The age of respondents reflects the Town's population. The following is a summary of the key findings of the survey (see Appendix A for more information).



Outdoor Recreation

- Most popular activities were walking/jogging on a path or trail (83 percent), riding a bike on a path or trail (50 percent) and walking a dog in a park (41 percent)
- Most visited parks and facilities were Emerald Ridge Park (31 percent), Double K Recreation Facility and Outdoor Rink (20 percent), and Emerald Ridge School Track and Sports Field (19 percent)
- The outdoor facilities with the highest levels of satisfaction were trails or paths (91 percent), playgrounds (71 percent), outdoor skating (63 percent), and splash park (61 percent)
- The outdoor facilities with the lowest levels of satisfaction were tracks (25 percent), pickleball courts (22 percent), and dog off-leash areas (10 percent)
- The outdoor features with the highest levels of satisfaction were safe places to ride a bike (83 percent), benches and waste receptacles (82 percent), and natural areas in parks (83 percent)
- The outdoor features with the lowest levels of satisfaction were outdoor washrooms (28 percent), tobogganing (23 percent), and cross-country skiing (20 percent)

Recreation Programs and Events

- The programs with the highest participation and satisfaction rates were library programs (36 percent), indoor events (27 percent), and volunteer opportunities (23 percent)

Planning for the Future

Participants were asked to rank five broad ideas for improvements to parks and programs, ranked from highest to lower:

1. Add more park amenities, e.g., community gardens, bike pump track, more dog off-leash areas
2. Add more paths to improve connectivity
3. Improve the quality of parks, e.g., smoother paths, more benches
4. Add different recreation programs, e.g., fitness, programs for youth, arts and culture programs, winter activities
5. Add to or change the community events

Highlights of Workshops

The following were some of the key themes from the workshops (see Appendix A for the full record).



Strengths

What is great about parks and trails in White City?

- Walking, biking and running trails
- Pickleball
- Splash park
- Lots of green space

What is great about recreation programs and events in White City?

- Summer play program
- Well attended winter and summer festivals
- Library programs
- Sports leagues



Challenges

What is not great about parks and trails in White City?

- Lacking more amenities in the larger parks, and spaces for people to congregate
- Need for a dog off-leash area
- Lots of the green spaces aren't well used
- Fields are lacking quality
- Need more outdoor washrooms

What is not great about recreation programs and events in White City?

- Lacking programs for teens and youth
- Seniors programs
- No pool or swimming lessons
- Not enough ice time



Vision

What vision should guide the Master Plan?

- Meet all residents' needs – seniors, adults, teens, young families
- Diversity of recreation opportunities
- Multi-purpose and multi-seasonal facilities
- Accessible and inclusive recreation facilities
- Aligned with Town values
- Sense of identity and ownership



Ideas

What would you like to see considered for White City's parks and trails?

- Winter facilities – place for sleds, outdoor ice rink, snowshoe trail, cross country ski trails, skating oval, tobogganing hill
- Bike facilities – mountain bike trails / pump track
- Picnic areas
- Multi-purpose courts
- Outdoor venue / natural amphitheatre
- Expanded trail system

What would you like to see considered for White City's recreation programs and events?

- More communication
- Expanding year-round recreation activities and opportunities
- Expanding programming available for young children and seniors
- More cultural programming





3

GUIDING STATEMENTS

The vision and objectives represent what the Town of White City would like to achieve through the PRMP. They are based on community input and alignment with the existing Town visions.

3.1 VISION

Parks, trails, and recreation in White City are accessible, inclusive, and safe, meeting the needs of all residents, and supporting active lifestyles and social connections, in a sustainable manner that is integrated with the region.

3.2 OBJECTIVES

To help achieve this vision, the following are the objectives of the PRMP:

- Promote a healthy and active community with year-round outdoor and indoor recreation opportunities
- Provide inclusive and welcoming access to recreation opportunities for everyone
- Enhance access to and connectivity of trails
- Enhance existing parks with new and improved amenities
- Support more opportunities for gatherings and events
- Increase programming opportunities for all ages and abilities
- Plan for complementary and innovative amenities in the new Town Centre



4 PARKS

4.1 PARK TYPES

The classification of parks and open spaces can provide an understanding of the various roles of parkland, which can be a useful planning and management tool (Map 1). The following is the proposed classification system for parkland in White City. Some parks are difficult to classify because they fit into more than one definition. In those cases, the most appropriate category is selected based on park use.

CLASSIFICATION	SIZE	DESCRIPTION	EXAMPLES
COMMUNITY PARK	Ideally a minimum of 2.0 ha, current range is 0.75 to 8.46 ha	<ul style="list-style-type: none"> Popular parks that serve residents from throughout the Town and beyond Help to form the visual, physical, and social focus of the community Typically include recreation amenities such as sports fields, playgrounds, and courts Support significant levels of use, potentially including community events Usually include parking lots 	Splash Park, Serbu Park, Double K Park, Wheatland Park, Fernwood Park, Emerald Ridge Park



CLASSIFICATION	SIZE	DESCRIPTION	EXAMPLES
NEIGHBOURHOOD PARK	Ideally a minimum of 0.5 hectares, current range is 0.06 to 1.62 ha	<ul style="list-style-type: none"> ■ Serve the recreation needs of residential neighbourhoods ■ Help to form the visual, physical, and social focus of a neighbourhood ■ Typically include play equipment, pathways, open grass, and seating ■ May also include other recreation amenities ■ Usually do not include parking lots 	Ridgedale Park, Hummingbird Park, Confederation/ Federal Park, Churchill Park, Bronco Park, Garden of Eden Park



CLASSIFICATION	SIZE	DESCRIPTION	EXAMPLES
LINEAR PARK	Typically large, but can vary, size of the linear park in town is 4.44 ha	<ul style="list-style-type: none"> ■ Corridors of public land ■ In White City, typically located along the pipelines ■ Typically support paths as the key recreation amenities ■ May include playgrounds, trails, and benches 	Aspen Park



CLASSIFICATION	SIZE	DESCRIPTION	EXAMPLES
OPEN SPACE	Variable sizes, current range is 0.09 to 19.90 ha	<ul style="list-style-type: none"> Includes locations that have value as green space, but without recreation opportunities 	Jade Park, Sarah's Cove, McKenzie Landing, other unnamed open spaces



Additional Land with Park Values

SCHOOL SITES		<ul style="list-style-type: none"> Green space portion of public school sites including fields and playgrounds (school buildings and parking lots are excluded) Included because the land usually has park values; however, school sites are not available for public use during school hours Land size is tabulated separately from the parks because school sites are subject to change by Prairie Valley School Division #208 	École White City Elementary, Emerald Ridge Elementary
---------------------	--	---	---



4.2 PARKLAND SUPPLY AND DISTRIBUTION

It is important that parks are available for use by all residents. White City has 13 park sites covering 25.6 hectares of land. With additional open space and school sites, there are almost 55 hectares of protected green spaces within the Town.

PARK TYPE	NUMBER	HECTARES
COMMUNITY PARKS	6	18.1
NEIGHBOURHOOD PARKS	6	4.09
LINEAR PARKS	1	3.44
TOTAL PARKS	13	25.64
OPEN SPACE	N/A	20.91
SCHOOL SITES	2	8.32
TOTAL PROTECTED GREEN SPACE		54.98

Parkland supply was analyzed by spatial distribution, or the distance people can walk to reach a park with recreation amenities (Map 2). This analysis, which follows paths and roads, is based on the following target walking distances, which is a typical approach:

- Five-minute walk (400 metres) to community and neighbourhood parks, unless the park is less than 0.2 ha, in which case it is assumed to serve immediate neighbours within 100 metres only
- School sites are included in the analysis with a walking distance of 400 metres as they are similar to community parks in White City

Most of White City's residential areas are within a five-minute walk from a park; walking distance to a park is not expected in industrial or rural areas. A few houses on Emerald Hill Drive, and blocks on the southeast edge of the Town's boundary, along Fernwood Street are not within a five-minute walk of a community park, neighbourhood park, or school. Some of these are properties with large estate lots where park access is not as important. In fully developed areas, such as the southwest area, it would be difficult for the Town to acquire new parkland.



4.3 PARK ANALYSIS

White City's parks are generally attractive with mature trees, plants, irrigated grass, and a variety of amenities. Most of the parks are manicured and well used by the community. The following is an evaluation of White City's parks based on community and staff input, and professional analysis.

Inclusive Design

The trend in design is to provide non-threatening, welcoming, and inclusive parks, facilities, and public spaces. This includes universal accessibility, such as play surfaces and equipment that can accommodate multiple ages and abilities, and people facing a wide range of mobility and sensory challenges. We learn through inclusive design studies that many people are temporarily able-bodied, as anyone can lose abilities temporarily or permanently through aging, health challenges, or accidents.

- Examples of diverse users include a parent pushing a stroller, small children, and those with autism or visual impairment
- Examples of typical barriers in a playground include curbs, steps, soft surfaces (such as sand or wood chips), and play equipment that requires children to be able-bodied (have sufficient strength and coordination)
- Examples of inclusive design in a playground include ramps, smooth surfaces (such as paving or poured-in-place rubber), a variety of seating options (including backrest and armrest options), available shade, and play equipment that serves all levels and abilities



It would be nice if all parks with playgrounds had bathroom access for the children.

– Community Survey Respondent

PARK	DESCRIPTION AND AMENITIES	STRENGTHS	CHALLENGES / NEEDS
COMMUNITY PARKS			
SERBU PARK 5.3 HA	<ul style="list-style-type: none"> major community park three ball diamonds with bleachers and dugouts two batting cages skatepark canteen playground washroom benches, picnic tables, garbage cans, lighting 	<ul style="list-style-type: none"> park is very popular well used by user groups ball diamonds are used for slo-pitch, baseball, tournaments, and softball, one has lighting close to Community Centre, Town Hall, Library, and trail that connects with Confederation / Federal Park used year-round skatepark is popular among youth fields can be rented – revenue source ice cream shop near by host some of the community's events, e.g., Summer fest, outdoor movies, fireworks 	<ul style="list-style-type: none"> drainage issues playground is for small children only close to highway (noise issues) some vandalism on skate park big tank on site (water storage for irrigation) some of the bleachers are old batting cages are old trails are not as well connected as in other parts of town lack of places to sit and gather
SPLASH PARK 1.38 HA	<ul style="list-style-type: none"> popular family park splash pad (open June to September weather-permitting) three playgrounds gazebo waste receptacles, picnic tables, BBQ pad, benches seasonal porta-potty 	<ul style="list-style-type: none"> splash pad is very popular in warm weather splash Park was recently renovated one of the playground structures has inclusive design features, e.g. an accessible ramp to the elevated structure the three playgrounds offer a variety of play opportunities for different age groups whole park is irrigated and green all year good tree cover 	<ul style="list-style-type: none"> gazebo structure is old and small no permanent washrooms drainage issues rubber tiles on one of the playgrounds creates uneven ground and accumulates leaves and dirt some of the play structures are very old

PARK	DESCRIPTION AND AMENITIES	STRENGTHS	CHALLENGES / NEEDS
COMMUNITY PARKS (CONTINUED)			
DOUBLE K PARK 0.75 HA	<ul style="list-style-type: none"> ■ winter park destination ■ fairly new outdoor rink (2017/2018) ■ smaller rink made with snowbanks for younger kids ■ park pavilion and warm-up shelter, includes washroom and Zamboni storage (2018/2019) ■ basketball hoops 	<ul style="list-style-type: none"> ■ well used in winter ■ building is used as daycare too ■ hosts popular winter festival (with fire pits, DJ, hotdogs, etc.) 	<ul style="list-style-type: none"> ■ not much use in warmer seasons
FERNWOOD PARK 1.07 HA	<ul style="list-style-type: none"> ■ mid-volume park ■ connected to the walkway system with two access points ■ large play structure ■ four pickleball courts (on two tennis courts) ■ benches, waste receptacle, doggie bags ■ seasonal porta-potty ■ storage shed 	<ul style="list-style-type: none"> ■ pickleball courts are popular ■ heavily treed with established deciduous trees ■ play structure is fairly new ■ easy to convert courts from pickleball to tennis 	<ul style="list-style-type: none"> ■ sometimes court is used by dogs ■ parking challenges ■ no permanent washroom facilities ■ courts need to be locked during non-permit hours because of vandalism
WHEATLAND PARK 1.15 HA	<ul style="list-style-type: none"> ■ has space used as a football field, with goal posts ■ seasonal porta-potty ■ storage shed 	<ul style="list-style-type: none"> ■ well connected to walking paths ■ grass space is used by community flag football and football groups ■ also used by Emerald Park residents ■ heavily treed (poplar and fruit trees) 	<ul style="list-style-type: none"> ■ parking challenges ■ no permanent washrooms
EMERALD RIDGE PARK 8.46 HA	<ul style="list-style-type: none"> ■ highest use park in White City ■ extensive walkway trail that connects to adjoining subdivisions ■ playground ■ benches, waste receptacles, doggie bags ■ lighting and signage ■ has space used for youth flag football and soccer 	<ul style="list-style-type: none"> ■ well used for walking, jogging, and dog-walking ■ centrally located ■ largest park in White City ■ very popular playground – was recently upgraded and has inclusive design features, e.g., lower-level deck and transfer station ■ large planting beds with flowering plants ■ Chuka Creek passes through park – some areas are wetlands ■ grass space is used by community flag football and soccer groups 	<ul style="list-style-type: none"> ■ could benefit from outdoor fitness equipment ■ Lot Road goes through park

PARK	DESCRIPTION AND AMENITIES	STRENGTHS	CHALLENGES / NEEDS
NEIGHBOURHOOD PARKS			
RIDGEDALE PARK 0.90 HA	<ul style="list-style-type: none"> ■ small, low use neighbourhood park ■ one swing set, one small ball diamond ■ benches, garbage receptacles, doggie bags ■ parking lot 	<ul style="list-style-type: none"> ■ connected to the walking paths with two access points – connects to Emerald Park ■ ball diamond is primarily used by children ■ heavily treed (older poplar, evergreen, fruit trees) 	<ul style="list-style-type: none"> ■ surrounded by backyards – does not serve a broader community ■ pathways are not in good condition
HUMMINGBIRD PARK 0.90 HA	<ul style="list-style-type: none"> ■ small, low use neighbourhood park ■ large open lawn area ■ has space used for youth flag football and sportball 	<ul style="list-style-type: none"> ■ connected to the walking paths with two access points ■ heavily treed (poplar, evergreen, and fruit trees) ■ beautiful space, used for wedding photos ■ grass space is used by flag football and sportball groups 	<ul style="list-style-type: none"> ■ contains no playground equipment or amenities ■ surrounded by backyards – does not serve a broader community ■ no waste receptacle or doggie bags
CONFEDERATION/ FEDERAL PARK 1.62 HA	<ul style="list-style-type: none"> ■ mid-volume neighbourhood park ■ small, fenced ball diamond with bleacher ■ bench, waste receptacles, doggie bags, signage ■ lighting 	<ul style="list-style-type: none"> ■ connected to the walking paths ■ Chuka Creek passes through park (dries out) ■ ball diamond used informally ■ path is used most by older demographic ■ no irrigation, but always green 	<ul style="list-style-type: none"> ■ bleacher is old and decaying ■ drainage issues in ball diamond area
CHURCHILL PARK 0.35 HA	<ul style="list-style-type: none"> ■ low volume neighbourhood park ■ bench, waste receptacles, doggie bags, bike racks ■ play structure installed in 2019 ■ young spruce trees planted in fall 2016 ■ solar lighting 	<ul style="list-style-type: none"> ■ well used by surrounding residents 	<ul style="list-style-type: none"> ■ it is surrounded by backyards – less access from broader public ■ maintenance issues with sand surface at playground
GARDEN OF EDEN PARK 0.06 HA	<ul style="list-style-type: none"> ■ small, fenced play area ■ picnic table 	<ul style="list-style-type: none"> ■ in new development ■ fairly new structure 	<ul style="list-style-type: none"> ■ serves only nearby homes

PARK	DESCRIPTION AND AMENITIES	STRENGTHS	CHALLENGES / NEEDS
LINEAR PARKS			
ASPEN PARK 3.44 HA	<ul style="list-style-type: none"> mid-volume linear park connected to the walkway/trails bench, waste receptacle 	<ul style="list-style-type: none"> well used for walking older trees 	<ul style="list-style-type: none"> challenges with roots under pathway even after crack-sealing the path every year, it presents risks for those using some types of wheels

”

I appreciate the time that goes into making sure flower beds and planters around the community are cared for.

– Community Survey Respondent



4.4 AMENITIES ANALYSIS

Amenities in parks support recreation activities and social interactions that together contribute to a healthy community. The following is an analysis of the supply and quality of outdoor recreation amenities in White City.

*I love White City facilities
and amount of effort put in.*

– Community Survey Respondent

AMENITY	INVENTORY	STRENGTHS	CHALLENGES AND NEEDS
SPORTS FIELDS (1)	<ul style="list-style-type: none"> good quality soccer/football field at Ecole White City small field at Emerald Ridge School suitable for school use only 	<ul style="list-style-type: none"> good quality and size of field at Ecole White City 	<ul style="list-style-type: none"> Emerald Ridge field would benefit from irrigation using the Town's well
BALL DIAMONDS (6)	<ul style="list-style-type: none"> three full ball diamonds with bleachers at Serbu Park one small, grass ball diamond at Ridgedale Park one small, grass ball diamond at Confederation/Federal Park one grass ball diamond at Ecole White City 	<ul style="list-style-type: none"> good supply premium facilities at Serbu Park 	<ul style="list-style-type: none"> some ball diamonds need upgrading (uneven ground) batting cage is old
PLAYGROUNDS (15)	<ul style="list-style-type: none"> new splash pad with features for all ages on concrete at Splash Park newer, ages 5–12 playground on sand surface at Splash Park accessible, ages 2–12 playground on rubber tiles at Splash Park older swing set and play structure, ages 2–12, on sand at Splash Park newer play structure, ages 2–12 on sand at Emerald Ridge Park newer play structure on sand at Fernwood Park 	<ul style="list-style-type: none"> good supply good distribution most of the play equipment is in good condition play structures that serve different age groups (2–5 years and 5–12 years) 	<ul style="list-style-type: none"> some play equipment is aging and needs to be replaced over time most play equipment does not have inclusive design features most edging and surfacing of play areas are not inclusive (sand and mulch are not ideal for children with mobility limitations) not many opportunities for natural/creative play Serbu Park (high-volume community park) only has a small playground for ages 2–5

AMENITY	INVENTORY	STRENGTHS	CHALLENGES AND NEEDS
PLAYGROUNDS (15) CONTINUED	<ul style="list-style-type: none"> ■ newer, ages 5–12 playground on sand at Churchill Park ■ good condition, ages 2–5 playground on sand at Serbu Park (by skatepark) ■ newer, ages 5–12 playground on wood fiber at Garden of Eden Park ■ swing set at Ridgedale Park ■ newer play structure, ages 5–12 at Ecole White City School ■ newer play structure, ages 2–5 at Ecole White City School ■ older swing set and structure at Ecole White City School ■ two newer playgrounds with swing sets at Emerald Ridge Elementary School 		
TOBOGGANING HILLS (2)	<ul style="list-style-type: none"> ■ one at Ecole White City School ■ one at Emerald Ridge Elementary School 		<ul style="list-style-type: none"> ■ few opportunities for tobogganing ■ existing hills are small and not steep ■ very high dissatisfaction
BASKETBALL COURTS (6)	<ul style="list-style-type: none"> ■ two at Double K Rink ■ two at Ecole White City School ■ two at Emerald Ridge Elementary School 	<ul style="list-style-type: none"> ■ high supply ■ quality is good 	
TENNIS COURTS (2) OR PICKLEBALL COURTS (4)	<ul style="list-style-type: none"> ■ at Fernwood Park 	<ul style="list-style-type: none"> ■ in good condition ■ used mainly by pickleball community 	
OUTDOOR RINKS (3) AND WARMUP SHELTER (1)	<ul style="list-style-type: none"> ■ one outdoor rink at Ecole White City School ■ one outdoor rink with concrete surfacing at Double K Park ■ one small outdoor rink on grass for younger kids at Double K Park ■ one warm-up shelter / park pavilion at Double K Park 	<ul style="list-style-type: none"> ■ great facilities at Double K Park 	<ul style="list-style-type: none"> ■ outdoor rink at school is old and does not have a warm-up shelter

AMENITY	INVENTORY	STRENGTHS	CHALLENGES AND NEEDS
PICNIC TABLES (4), BBQ (1), AND SHELTERS (1)	<ul style="list-style-type: none"> two picnic tables at the Splash Park (one covered and one uncovered) BBQ pad at Splash Park older gazebo at Splash Park one uncovered picnic table at Serbu Park (in the skate park) one uncovered picnic table at Garden of Eden Park 	<ul style="list-style-type: none"> high use of parks for picnic activities 	<ul style="list-style-type: none"> few picnic tables and gathering areas (especially in community parks) lack of covered structures for weather protection
BENCHES	<ul style="list-style-type: none"> most parks have at least one bench and one waste receptacle, many have doggie bag dispenser 	<ul style="list-style-type: none"> good supply most benches are in good / new condition 	
WASHROOMS (2) AND SEASONAL WASHROOMS (3)	<ul style="list-style-type: none"> Serbu Park and Double K Pavilion have permanent washroom facilities Fernwood Park, Wheatland Park, and Splash Park have seasonal washroom facilities (porta-potty) 	<ul style="list-style-type: none"> Two permanent washroom facilities 	<ul style="list-style-type: none"> some community parks have only seasonal washrooms high dissatisfaction



Need more seating and picnic tables around the splash park. Consider more benches throughout the trails.

– Community Survey Respondent

4.5 SPORTS FIELD ANALYSIS

In response to a request from Council, a more detailed analysis was conducted of sports fields. This includes an evaluation of sports field quality, supply, and use.

Field Quality

White City has one high-level sports field at Ecole White City. Through cooperation with the Prairie Valley School District and a Joint Use Agreement, the field was upgraded in 2013/14 with irrigation and sod. It is maintained by the Town and is a showcase amenity in White City. The field is used by the school during the day, and it is booked for community use after hours. The field is split into halves or thirds for practice, and it supports soccer games including one annual tournament.

There are three other spaces in White City that are used for community field sports; these are smaller or lower quality as sports fields. Wheatland Park has a grass area with goal posts used for football practice. Emerald Ridge Park and Hummingbird Park have spaces used for field sport practices. There is also a small field at Emerald Ridge School; it is used only by the school as it is not to a standard needed for community play.

All of the community fields receive regular maintenance to support safe use. Based on input received from White City Futbol, Emerald Ridge Park is a good quality space. Ecole White City would benefit from some reseeded. If Ecole White City had lights, the group could play later into the evening; however, the potential increase in play and current field use may not justify that expense.

Field Supply

Part of the analysis involved comparing the supply of sports fields with those of other communities in Saskatchewan (Figure 4.1). Only proper sports fields are included in this analysis. Communities in the region were selected where possible because sports activities vary in different locations based on history, interests, and climate. Two types of communities were selected:

- Towns and rural areas similar to White City – Rural Municipality of Edenwold, Town of Pilot Butte, Town of Battleford
- Cities close to and similar to White City – City of Regina, City of Humboldt, City of Melville

An analysis of field supply by total population and youth population is shown. The analysis by youth population is only included for the smaller municipalities where the sports fields serve only youth, as the cities have youth and adults using their fields.



COMMUNITY	SPORTS FIELDS	POPULATION SIZE (2021)	YOUTH POPULATION 5 TO 14 (2021)	SPORTS FIELDS PER 1000 POPULATION	SPORTS FIELDS PER 1000 YOUTH
RURAL MUNICIPALITY OF EDENWOLD	1	4,466	665	0.22	1.50
TOWN OF PILOT BUTTE	1	2,638	365	0.38	2.74
TOWN OF BATTLEFORD	1	4,400	640	0.23	1.56
CITY OF REGINA	60	226,404		0.27	
CITY OF HUMBOLDT	2	6,033		0.33	
CITY OF MELVILLE	1	4,493		0.22	
AVERAGE OF COMPARABLES				0.28	1.94
TOWN OF WHITE CITY	1	3,702	750	0.27	1.33

Information on field numbers is from community websites, Google Earth, and some phone calls

White City has the highest number of sports fields per population compared to the other selected communities. This is true for communities of a similar size and comparable cities. White City does have a higher percentage of youth than the other communities so its field supply in relation to the youth population is lower. All of the smaller communities have one sports field.

Field Use

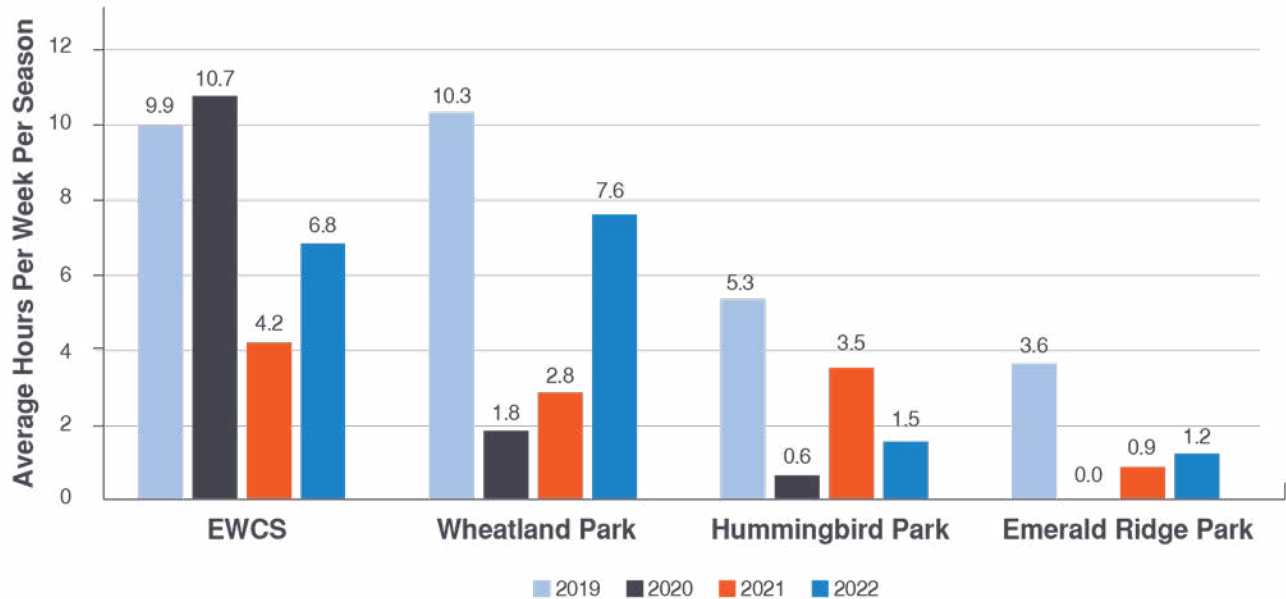
All community use of sports fields in White City is by youth, as the adults play their sports in Regina. There are four sports groups. The number of participants and the maximum hours per season booked between 2019 and 2022 are shown below:

GROUP	PARTICIPANTS	MAXIMUM HOURS / SEASON
WHITE CITY FUTBOL (SOCCER)	400	132
PRAIRIE MINOR FOOTBALL ASSOCIATION	120	40
REGINA YOUTH FLAG FOOTBALL LEAGUE	160	275
SPORTBALL		42

Participants were not available for all groups

Figure 4.2 shows the average hours played weekly per season on the four fields. All four fields experienced a decrease in use during the height of the COVID-19 pandemic (2020 to 2021). No field has fully recovered to its 2019 use level.

Figure 4.2: Sports Fields - Average Hours Per Week Per Season, White City



Soccer plays from late April to the middle of June. The other sports play up to 25 weeks annually from late April to early October. Based on input received from White City Futbol, there is enough field capacity to support their demands for use. Almost all of the use is scheduled on weekday evenings starting between 5:00 and 6:00pm, except for sportball, which starts earlier.

The highest use field, at Ecole White City, is seeing a maximum of 11 hours of weekly use. A typical guideline is that natural grass fields should not be used more than 20 hours weekly.

Summary

Based on current use patterns and the supply of fields, White City has enough sports fields to meet the demand. If use increases, an option is to adjust the scheduling of the fields so they can support additional use, e.g., schedule practices to start earlier on weekdays and add practices on weekends. While it may not match historic use patterns and lifestyle considerations in White City, it would be a way to make better use of resources. In the long term, there may be an opportunity to partner with the School District to upgrade the field at Emerald Ridge School; however that field is small and the school building will be expanding so space is limited. It will likely make more sense in the future to add more high-quality sports fields in the new Town Centre.

4.6 SUMMARY ANALYSIS

The following is a summary of the key needs and best practices that support these:

Aging infrastructure

Some of the park infrastructure, such as some playgrounds, batting cages, bleachers, and sports field surfaces, need upgrading or replacement. Best practice is to include park infrastructure in an asset management system so it can be upgraded over time as needed. There are significant opportunities to replace playgrounds with creative play environments that include natural play equipment and integrate play equipment with natural features.

Nature in parks

White City's parks include extensive areas of mowed grass that extend beyond the spaces needed for active play. To align with best practices and to improve sustainability, the Town could naturalize more areas within parks and plant more trees in some parks. The benefits would include reducing maintenance costs, providing more nature experiences, and supporting more wildlife.

Amenities

The following amenities were suggested during community engagement:

- **Permanent washrooms in the highest use parks** – this makes park use more comfortable for all users and is becoming a best practice; Splash Park and Emerald Ridge Park are the highest priorities for washrooms
- **Tobogganing** – this is a high priority for the community, and it is challenging to achieve in the developed part of White City; piling cleared snow in existing parks, as done during COVID, may be a good temporary option, with a new toboggan hill a high priority in the new Town Centre
- **Dog off-leash area** – although Emerald Park has a new dog off-leash area, residents would benefit from one in White City, potentially featuring more amenities such as a loop path, agility equipment, water fountain, shade, fence, and double gate; dog off-leash areas are now a best practice as they offer socialization and physical activity for dogs and humans
- **Covered park pavilion** – a covered space with picnic facilities and potentially a stage could become a social hub and extend the hours of park use; there are many examples of park pavilions that enliven parks
- **Outdoor fitness equipment** – outdoor fitness equipment could support the Town's vision for an active lifestyle for all ages; best practices show that this type of equipment works best in parks that are already popular, located near playgrounds, trails, and other amenities
- **Disc golf** – a very inexpensive amenity to install, disc golf could engage youth and bring more activity to the park where it is located
- **Bike skills area** – this is a popular trend that enables children to learn bike skills in a safe environment
- **Cross-country skiing** – this is difficult to integrate within existing developed areas; it could be considered within the new Town Centre or supported as a winter use in the golf course (which is located in Emerald Park)

I love that in our community we have doggy bags at garbage receptacles to encourage people to pick up after their pets (I brag about this feature and would like to see this continue).

– Community Survey Respondent

New Town Centre parks

The new Town Centre plan provides for a network of green corridors that include environmentally sensitive areas, the Chuka Ponds, and parks. A major new park south of the future Civic Centre is planned to include a large plaza for activities, playgrounds, lookout, boardwalk, picnic areas, an amphitheatre, a cenotaph, and direct access to the future ponds that will support numerous winter activities. Other uses likely in the new parks include sports fields, track, ball diamonds, courts, outdoor rinks, community gardens, picnic spaces, and a dog off-leash area.



4.7 RECOMMENDATIONS FOR PARKS

Land Acquisition

P.1.

Use the following guidelines for the acquisition and planning of parks in the new Town Centre:

- Ensure that meaningful open spaces for parks and recreation facilities are dedicated throughout the community during the subdivision process per the OCP
- Include at least four community parks, one in each new community
- Provide a community or neighbourhood park within 400 metres of all residences
- Use the minimum park sizes in section 4.1
- Provide linear parks connecting key destinations and all parts of the community
- Select sites for community and neighbourhood parks that are at least 75 percent developable for recreation amenities, i.e., under 10 percent slope, not environmentally sensitive
- Acquire the following lands in addition to community and neighbourhood parks – stormwater management facilities, steep slopes, other hazard lands, riparian areas, other environmentally sensitive areas
- Locate community and neighbourhood parks next to natural areas where synergies will benefit users
- Locate community and neighbourhood parks with pedestrian access from all four sides if possible
- Locate community and neighbourhood parks with significant street frontage to a local or collector road on at least one side
- Locate community parks with access from a trail system, and neighbourhood parks as well if possible

Recommendations in all sections are organized under the following headings, where applicable:

- Land Acquisition
- Planning and Design
- Capital Projects
- Service Delivery



Overall, we just can't believe how lucky we are to live in this community. The amenities that are offered already are astounding for such a small community.

– Community Survey Respondent

Planning and Design

P.2. Prepare a park plan for Serbu Park due to the number of new amenities proposed and the need for overall upgrading of this park.

- Consider that in the long term, some or all of the facilities in Serbu Park may be relocated to the new Town Centre to a better location that is not affected by highway noise.

P.3. Use the following design guidelines in all park planning, design, and construction:

Park Features

- Include gathering places, with seating and spaces appropriate for picnics and group activities according to the type and size of the park.
- Provide seating in all parks and along multi-use trails, with an ideal minimum spacing of 500 metres along high-use trails.
- Explore opportunities to integrate outdoor exercise equipment in or near playgrounds in new or redeveloping community parks.
- Continue to incorporate lighting along major trails and in park areas that are used year-round.
- Integrate urban agriculture within parks, potentially including community gardens, collaborative/shared gardening, fruit and nut trees, pollinator gardens, demonstration gardens, and collaboration spaces.

Park Design

- Use universal design principles to welcome all park visitors, including pathway loops that are fully accessible to all where possible.
- For parks that include parking areas, design the parking efficiently, minimize the amount of hard (or gravel) surface, and keep the parking as close to the perimeter of the park as possible.
- For large parking lots, include trees, planting, and rain gardens during upgrading projects or new construction.
- Plant trees in parks to the degree possible for shade and as a contribution to the urban forest, guided by the Town's Urban Forestry Management Strategy.
- Use Crime Prevention through Environmental Design (CPTED) principles, balancing these with the need to protect and enhance natural areas.
- Design playgrounds and their surroundings with the goal of increasing creativity and interest, e.g., more interactive play environments and equipment, allow children to experience more nature in parks, and provide options for all ages of children, youth, and adults.
- Incorporate poured rubber surfacing for accessibility purposes in larger new playgrounds.
- When planning and designing new parks, consider life cycle cost analysis and water and energy consumption.
- Design parks with consideration for protection and enhancement of environmental resources and include rainwater infiltration where possible.
- Celebrate local artists in parks, with more public art such as murals, mosaics, sculptures, and integration of public art into park amenities or furnishings.
- Design dog parks with diverse paths, features, vegetation, and amenities for dogs and their walkers.

Capital Projects

- P.4.** Upgrade existing parks with the following potential improvements and amenities:

Serbu Park

- covered park pavilion
- play equipment for different age bracket (ages 5-12) with natural/ creative play environment
- more picnic tables, BBQs, and gathering spaces
- bike skills park
- perimeter trail
- new batting cage and bleachers as needed
- improve drainage
- more trees and shrubs especially along highway

Splash Park

- new play equipment to replace aging equipment
- permanent washroom
- picnic shelter(to replace gazebo)
- more picnic tables, BBQs, and gathering spaces
- improve drainage
- poured rubber surfacing in play area

Fernwood Park

- permanent washroom

Wheatland Park

- permanent washroom

Aspen Park

- option for an off-leash dog area

Hummingbird Park

- playground
- seating and waste receptacles

Emerald Ridge Park

- outdoor fitness equipment
- permanent washroom
- option for an off-leash dog area



Would love for the skate park to be larger. Dirt jumps for bikes could also be fun for kids (most mountain towns have them).

– Community Survey Respondent

P.5. Establish an asset management cycle for replacement and upgrading of park amenities, including sports fields.

Advocate to include the following amenities in new Town Centre parks:

- P.6.**
- premium soccer field and three additional fields based on analysis of sports opportunities and trends
 - one premium ball diamond and three additional diamonds
 - playgrounds in community and neighbourhood parks, with one splash park, and two fully accessible
 - off-leash dog area with paths and diverse features
 - pickleball courts
 - outdoor rink with skating oval
 - skate park
 - bike pump track
 - toboggan hill

P.7. Collaborate with Prairie Valley School Division #208 to irrigate the Emerald Ridge field.

Service Delivery

P.8. Obtain additional funds for operations and maintenance as new parks and amenities are developed.

P.9. Increase the provision of waste receptacles in high-use parks and trails.

- Locate waste receptacles where there are many people, such as playgrounds, courts, picnic areas, sports fields, and washrooms
- Locate waste receptacles around 800 metres (a 10 minute walk) apart on high-use trails
- Monitor waste receptacles to determine where additional ones are required

The number of waste receptacles required depends on the number of people who use an area, the amount of litter generated, and the timing of waste collection.

P.10. Continue collaborating with organizations such as Prairie Valley School Division #208, library, community groups, RM of Edenwold, and Emerald Park community to coordinate planning of parks, trails, amenities, and contiguous natural areas.

P.11. Collaborate with Prairie Valley School Division #208, RM of Edenwold, and other regional partners on planning sports fields to most effectively support the region, e.g., carrying out the Emerald Ridge Elementary Grounds Development Plan.



5 TRAILS

5.1 TRAIL OVERVIEW AND TYPES

Trails are a critical component of outdoor recreation, supporting fitness, social connections, active transportation, and opportunities to explore nature. There are over 15.6 km of existing trails (Map 1); 2.6 km of trails are proposed in the developed portion of the Town, and another 7.2 km are identified in the future Town Centre land use plan (Map 3). The existing trail system is complemented by fire lanes (“on-lane routes”) that are frequently used as trails.

White City's most popular outdoor activity among residents is to walk, hike or jog, and an exceptional 98 percent of survey respondents participate in these activities. Survey respondents also have very high satisfaction with the Town's trail system. There remain some opportunities for improvements to connectivity, safety, wayfinding, and maintenance.

The Town's trails connect most of the parks and neighbourhoods. One of the most popular trails is along Buck Creek in Emerald Ridge Park. This 1.1 km multi-use pathway connects with other multi-use trails that run along the two pipeline alignments, crossing town, and providing excellent connectivity.

In 2019, the Town completed a Multi-Use Pathway Network Improvement Project. It had four phases of implementation, and has been partially completed:

PHASE I — **Lott Road East**
Completed in 2021.

PHASE II — **Motherwell Drive**
To be completed in 2023.

PHASE III — **Ramm Avenue**
This pathway will provide the much-needed pedestrian connectivity along Ramm Avenue, from the existing pathway on Galloway Street to the Community Centre and baseball fields, some of the major focal points in the community.

PHASE IV — **Trans-Canada Trail**
While the pedestrian crossing has been completed, the connection remains closed due to the lack of connectivity to existing pathways and trails on both sides of Highway No. 1. Future legs of the trail will connect to major parks and recreation areas in the region, with the nearby communities requiring signage and painting of crosswalks on the pavement to ensure pedestrian safety.



Great pathway system, that needs some TLC.

– Community Survey Respondent

The existing trails vary in width, surface materials, and construction standards. Moving forward, two types of trails are appropriate for White City as described below.

Multi-Use Trail

- 1.5 – 3 m wide
- well compacted granular or paved surface
- major routes with relatively high use
- flat or gently rolling grades – maximum 8 percent slope
- meet universal design standards



Neighbourhood Trail

- 0.5 – 1.5 m wide
- natural or granular surface
- primarily flat or gently rolling grades
- meets universal design standards
- relatively short trails that provide connections within and between neighbourhoods



***More walking/
bike paths would
be awesome.***

– *Community Survey
Respondent*



5.2 SUMMARY ANALYSIS

The following is a summary of the key needs and best practices that support these.

Signage

There is a lack of signage along the trails for wayfinding and identification, and the map boards throughout the community are in poor condition. Many communities have wayfinding strategies that include design and graphic standards for signs, and plans for their location. Integrated with this, there are also opportunities for signs with interpretive and regulatory information.

Gaps in Connectivity

There are some gaps in trail connectivity in the north part of the Town, mainly the provision of links to the Splash Park. There are also gaps on the east side of the Town between Double K Park and Aspen Park.

Trail Condition

Some of the paved trails through parks are cracking and heaving from tree roots, making them a hazard. These trails need to be rebuilt, potentially with a new design standard. One option is to convert these trails to compacted gravel that would be easier to adapt to tree roots; however, accessibility by certain modes would be reduced.



Keep up the great work with the paths and lighting. This town is an amazing place to walk a dog!

– Community Survey Respondent

5.3 RECOMMENDATIONS FOR TRAILS

Planning and Design

- T.1.** Conduct a wayfinding strategy that includes a signage system for wayfinding, regulatory, and interpretive signs for parks, trails, and facilities.

What is a Wayfinding Strategy?

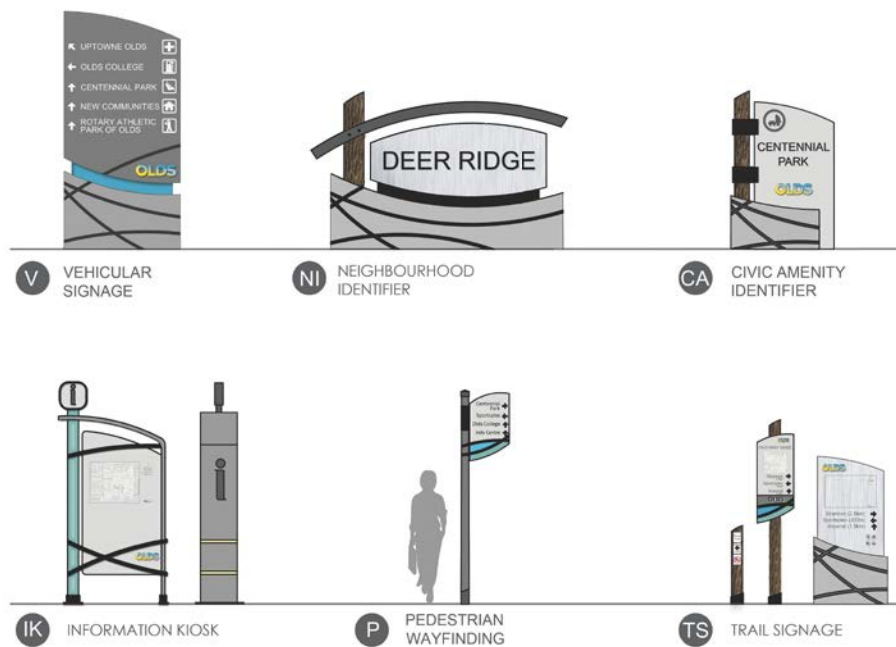
The primary goal of a wayfinding strategy is to establish a unique and consistent community-wide public signage system to direct and inform visitors and residents about key destinations and recreation amenities. The graphics are typically based on the branding and character of the municipality. A wayfinding strategy and new signage system is a particular opportunity for White City given the significant public realm development work planned for the new Town Centre.

Signage Examples

Augustana Campus



Olds



Tofino



T.2. Prepare and adopt new design standards for trails.

T.3. Name the key trails to assist with wayfinding.

T.4. Use the following guidelines for the planning and design of trails in the new Town Centre:

- Provide trail connections from the ends of cul-de-sacs
- Include perimeter trails in community parks with links to surrounding trails
- Develop and implement trail design standards for multi-use and neighbourhood trails

Capital Development

T.5. Continue to develop pathways proposed in the Multi-Use Pathway Network Improvement Project.

T.6. Add trail connections in the following locations:

- along Gregory Avenue West, from the Splash Park to the east (connecting to Galloway Street) and west (connecting to White City Drive)
- along Lipsett Street, from the Splash Park to the north (connecting to Ramm Avenue) and south (connecting to Kingsmere Avenue)
- along Galloway Street connecting Gregory Avenue West to Ramm Ave
- along Fernwood Street connecting Double K Park to Aspen Park

T.7. Construct signage system to include wayfinding, regulatory, and interpretive signs

T.8. Rebuild existing pathways that are cracking and heaving.

Service Delivery

T.9 Develop an “adopt a trail” program that involves community members, organizations, and businesses in keeping trails clean. Construct signage system to include wayfinding, regulatory, and interpretive signs





6

RECREATION PROGRAMS AND EVENTS

6.1 DESCRIPTION

Indoor facilities are important to all sizes of municipalities, offering opportunities to learn and participate in fitness, recreation, and social activities that are not possible outdoors, especially in cold winter climates. White City has three indoor recreation facilities, as described below.

Community Centre

The community centre is a 4000-square-foot building that includes the following amenities and infrastructure:

- Three multi-purpose rooms (that can be combined into one if needed) – equipped for training courses, conferences, meetings, trade shows, weddings, seminars, anniversaries, etc.
- Library
- Industrial kitchen
- Two full washrooms

With initial construction started in 1986, the Community Centre is in good condition for its age, as it has been well maintained. It has air conditioning and an outdoor courtyard that is used for activities and events.

The Town of White City offers recreation opportunities for residents and visitors through direct programming and through community associations that use the Town's facilities for a variety of programs. Facilities are also rented for birthday parties, weddings, and other gatherings in multipurpose rooms.

Double K Park Pavilion

Built in 2018-2019, this park pavilion serves as a warm-up shelter for skaters in the park, and it is also used as a daycare. It includes washrooms and Zamboni storage.

WC Cooperative Playschool

This heritage building was originally the Pibroch School, built in 1907, and it was moved to its current site years later. Located within the Splash Park, it now houses the WC Cooperative playschool group (operating since 1982) and is used year-round for programming.

Programs

The Town offers a good mix of programs. The fees are reasonable, and the Town supports a variety of programs with grants, physical space, and other items. The following are the types of programs available:

Fitness classes and programs – Fitness For All, Forever In Motion, White City Walks

Sports Leagues – slo-pitch, baseball, pickleball

Arts and culture programs – dance, drama, craft workshops, White City Museum

Library programs – story time, book club, workshops, with options for babies to seniors

Summer play program – very popular program that serves kids aged 5–12

Free to be – free and inclusive drop-in program for ages 10–14, with fun group activities for youth of all abilities including recreation, sport, art, and games

Courses – babysitting, Home Alone (partnership with YMCA), Mature Driver

Other – fundraisers, socials, garden club, volunteer programs and events

Recently, the Town has been involved in regional meetings about recreation programming and events.

Events

The Town organizes several well attended events throughout the year. The following are typical annual events:

“Chillfest” Winter festival – happens in fall/early winter, organized by the Town with the help of sponsors and volunteers; typically includes a DJ, bonfires, and ice creations; takes place at Double K Outdoor Ice Rink

Entertainment in the Park – happens in summer at Serbu Park; organized by the Town, it can include an outdoor movie, Council BBQ, carnival games, and entertainment

“Summer Sizzle” Summer festival – happens in summer at the Splash Park; organized by the Town with the help of sponsors and volunteers; includes many activities such as food trucks, facepainting, story telling, street dance, BBQ, live music, beer gardens, and fireworks

Christmas Decorating Contest & Twinkle Tour – decorated houses can register to participate in the contest via the Town’s webpage; residents can register for the charter bus tour or download the map for a self-guided tour. Online voting is available

White City Fun Run – family-friendly run across the community, organized by the Town with the help of sponsors and volunteers



I bet a lot of community residents have specific skills or knowledge that they can share with other residents. Perhaps we can do a series where community residents are encouraged to teach something or run a workshop, and for a fee residents can come out and participate.

– Community Survey Respondent

6.2 SUMMARY ANALYSIS

The following is a summary of the key needs and best practices that support these. Some of these may not be possible to achieve until the new Multi-Use Recreation Centre and more staff resources are available.

Number of Programs

As a small community with one older facility, there are a limited number of programs available in White City. Although satisfaction with programs is significantly higher than dissatisfaction among survey respondents, there is more demand than supply for the summer play program, and the top requests from the community are for more fitness and arts and culture programs. The library programs have the highest satisfaction rates. There is particular interest in more programs for seniors and youth, sports for girls, and multi-age concurrent programs.

Volunteerism

There are some active non-profit groups in the Town, but it is difficult to engage volunteers in new activities and events. Part of this may be challenges in informing residents of volunteer opportunities. It is also more difficult to engage volunteers in commuter communities.

Information

Survey respondents indicated that they are not always aware of recreation programs and events. This occurs in many communities, so it is important to employ as many channels of communication as possible. A best practice is to talk to participants to find out what type of communication works best for them.

Registration

The Town offers online registration for all programs through Perfect Minds software. This encourages more participation.

Indoor Facilities

The Town is limited by a lack of indoor facilities. Survey respondents noted that the lack of spaces for indoor sports, a pool, ice arena, and a larger library affect their ability to participate in recreation activities.

Community Events

Survey participants are generally satisfied with the events, and they are the lowest priority for change. One request is to offer more parking for events.

6.3 RECOMMENDATIONS FOR PROGRAMS AND EVENTS

Service Delivery

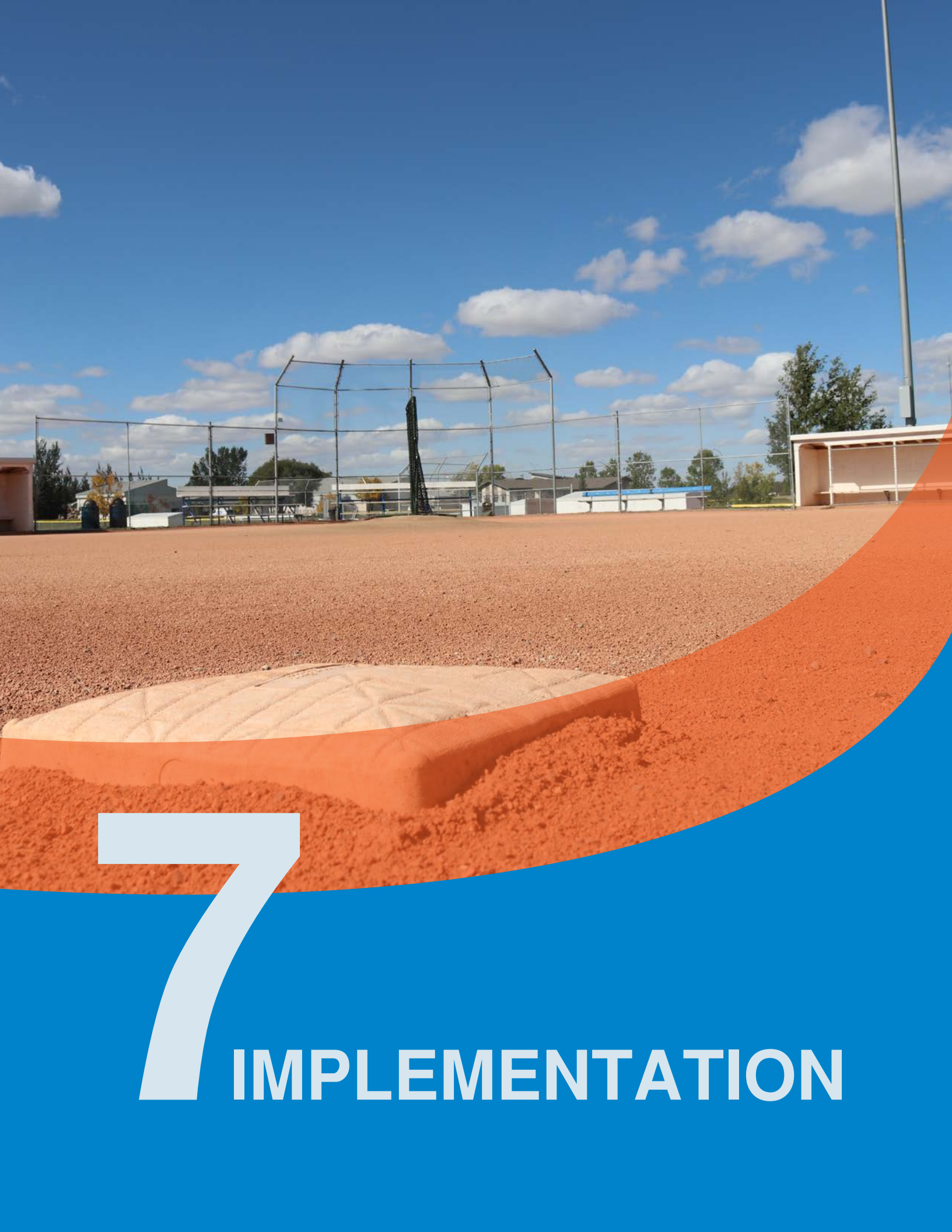
- PE.1.** Based on the capacity of the Community Centre and staff resources, increase programs offered, directly or through partnerships, with a focus on fitness, arts and culture, seniors and youth, sports for girls, and multi-age concurrent programs with child care. Continually modify programs based on registrations, demographic changes, trends, and evolving interests.
- PE.2.** Encourage community groups to offer more programs and events in parks, e.g., tennis instruction, bike skills, skateboard events.
- PE.3.** Work with community volunteers to identify any supports or incentives that the Town could provide to encourage more volunteerism, e.g., list opportunities on website, appreciation events.
- PE.4.** Provide more information on programs and events through multiple online and traditional channels.
- PE.5.** Organize transportation for events to provide alternatives to driving, and alternate parking locations with shuttle services for those who drive.

I just wish we had more craft workshops and indoor events for the long fall/winter and spring months.

– Community Survey Respondent







7 IMPLEMENTATION

7.1 IMPLEMENTATION TABLE

The PRMP will be implemented in phases based on community needs, the pace of development, funding opportunities, and Council's priorities as all of those evolve over time. The PRMP is a guiding document for the provision of facilities and services; it does not commit the Town to any project nor limit future opportunities. Recommendations will need to be confirmed and implemented through capital funding, grants, development contributions, and effective partnerships on an ongoing basis. The most important guidance is provided by the vision and objectives, which should be used to guide future decisions.

The implementation table on the following pages identifies the priority, phasing, and relative costs associated with the recommendations. The phasing strategy is based on a balance of the following criteria, in no particular order, and these criteria may be used or adjusted in annual capital planning:

- Alignment with the vision and objectives of the PRMP
- Existing condition and needs for upgrading or replacement to improve safety or reduce risk of failure, e.g., asset is at or near end of lifecycle
- Addresses a gap, i.e., the facility or amenity does not exist
- Level of community support per master plan and ongoing input
- Number and diversity of people served, especially in terms of inclusivity
- Ability to support population growth
- Cost to build
- Resources for maintenance
- Opportunity to implement as part of an associated project
- Opportunity for funding and partnership

The PRMP focuses on high-level recommendations, recognizing that detailed budgets are compiled by Town staff during budgeting processes.

The capital projects may evolve and change based on community needs, the pace of development, funding opportunities, and Council's future priorities.

The implementation table is included as Appendix B to the report.

7.2 NEXT STEPS

The implementation of the PRMP will involve the following:

- Incorporate recommendations into annual capital planning
- Integrate the PRMP with other Town documents
- Operational planning to ensure funding is in place to maintain new facilities
- Maintain relationships with and support efforts by community groups
- Maintain partnerships with surrounding jurisdictions, school district, and Indigenous communities
- Planning to support the development of new facilities, with community engagement
- Evolving service delivery to meet community needs
- Encourage and support land donations and bequests
- Track opportunities and submit applications for grants
- Include community engagement with each significant capital improvement, with the scale relative to the scope of the project, e.g., community parks and major trail projects should involve all residents, and neighbourhood parks and trail connections should be targeted to those affected
- Update the PRMP in five to ten years

White City has much to celebrate in its parks and recreation services and facilities. The guidance of this PRMP will enable the Town to continue improving parks and recreation opportunities with intention and purpose.





Appendix A

COMMUNITY ENGAGEMENT

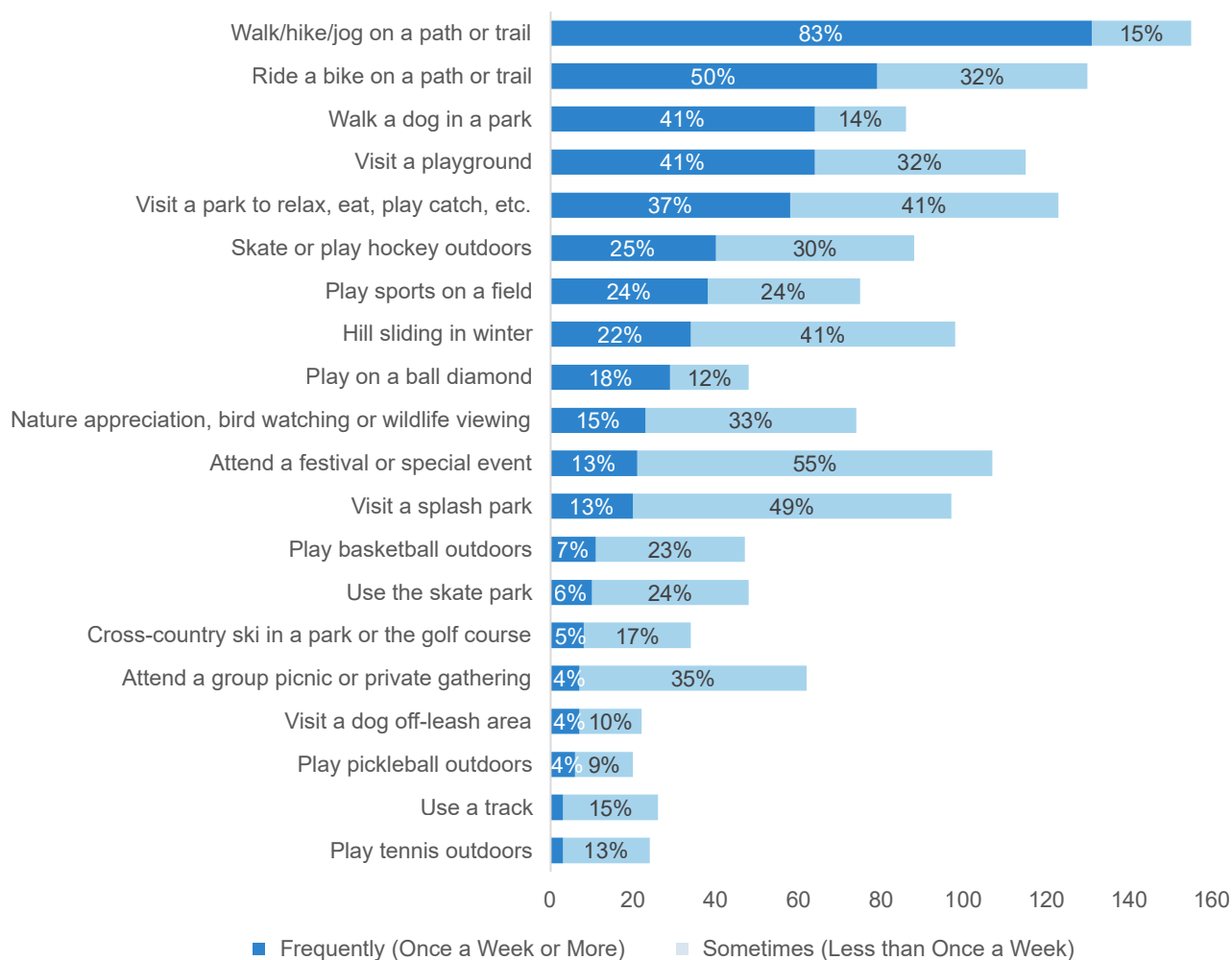
COMMUNITY SURVEY

The following is additional information from the community survey.

Outdoor Recreation

Participation in Outdoor Activities

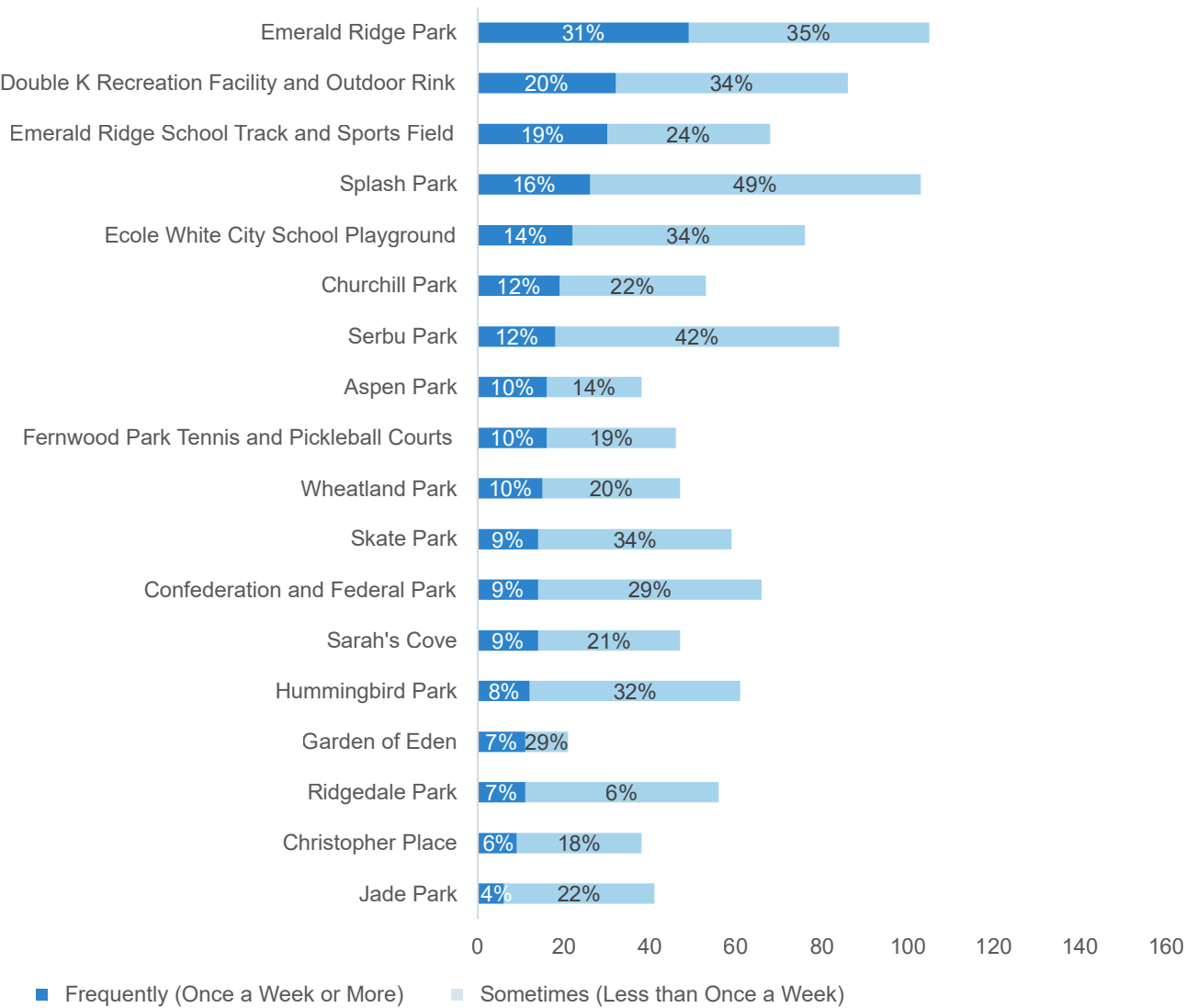
In the past year, did you participate in the following outdoor activities at a park or trail in or near White City (not including Regina)?



Total responses: 158

Use of Parks and Trails

In a typical year, how often do you visit any of the following parks or trails?

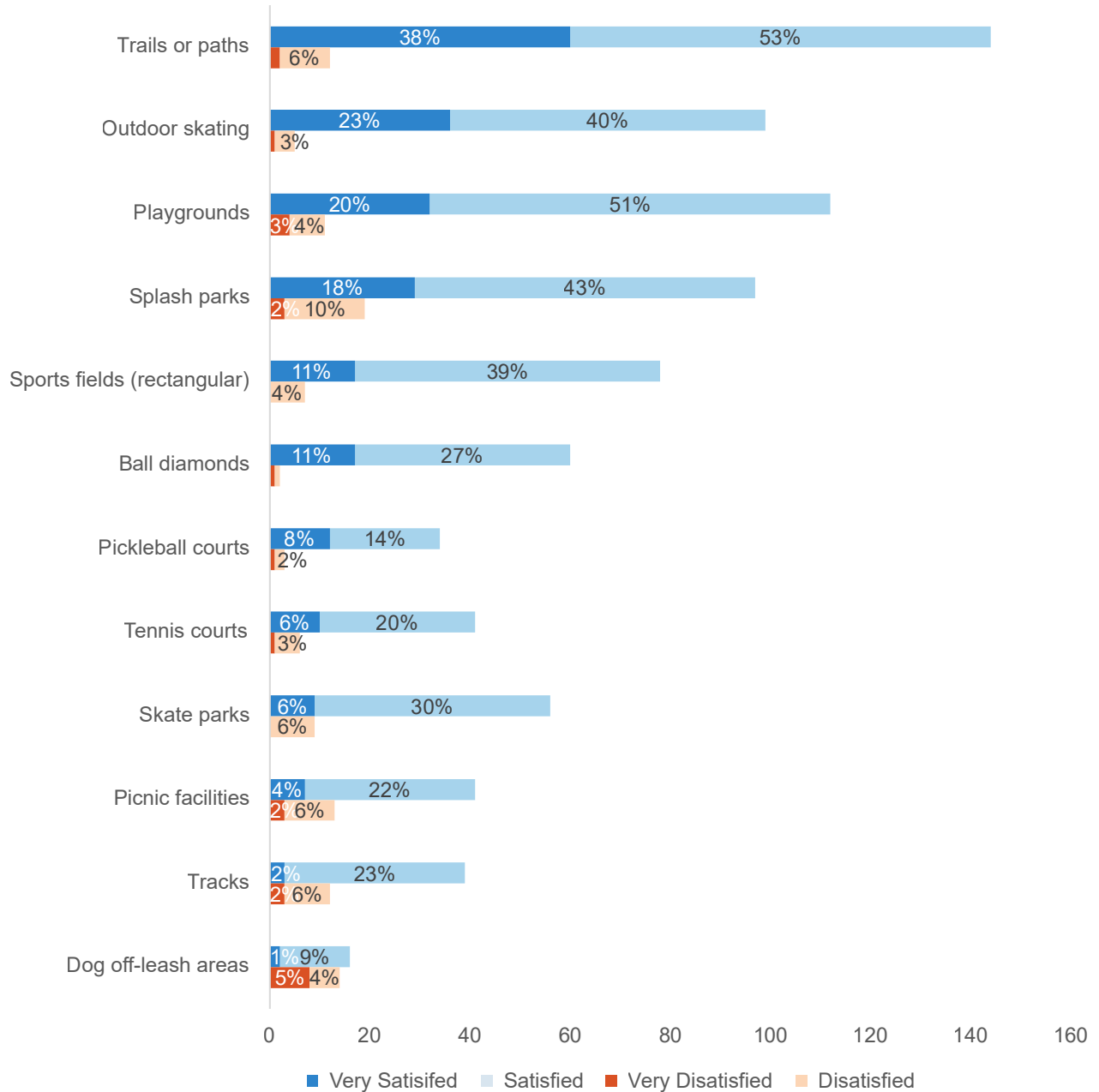


Total responses: 158



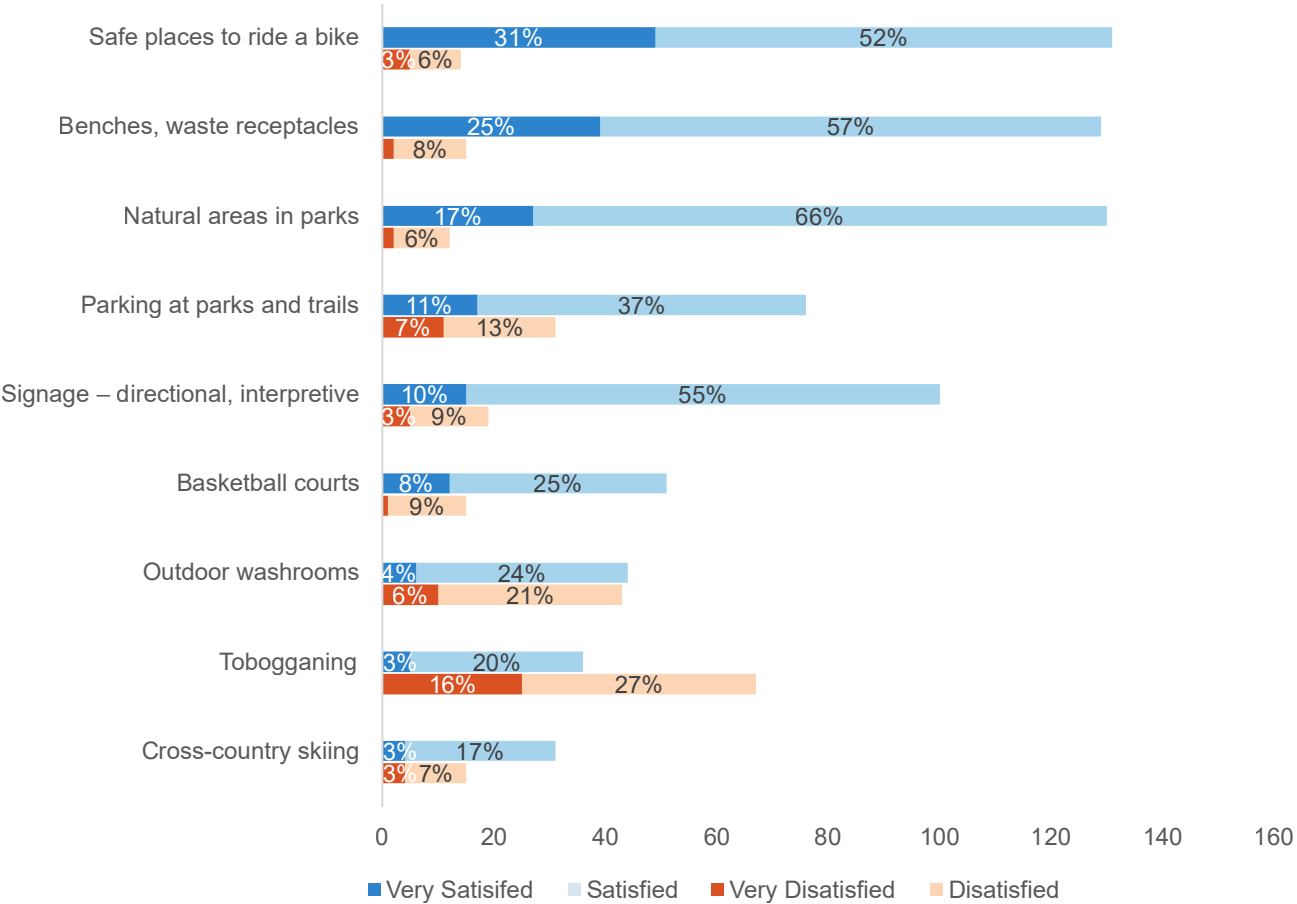
Satisfaction

What is your level of satisfaction or dissatisfaction with the following outdoor amenities in or near White City (not including Regina)?



Total responses: 158

What is your level of satisfaction or dissatisfaction with the following outdoor features in or near White City (not including Regina)?



Total responses: 158



Outdoor Recreation Key Themes

There were 94 additional comments about outdoor recreation (parks, trails and outdoor activities). The following are the comments by more than one person organized by topic. Numbers in brackets reflect the number of people that made comments about the same theme.

Park Amenities (46 comments)

- More toboggan hills (10)
- More washrooms (8)
- More garbage cans (7)
- Dog park needed (7)
- More benches and rest areas (6)
- Outdoor pool (3)
- Better lighting in parks and along trails (3)
- Dirt jumps/pump tracks (2)

Trails and Related Amenities (23 comments)

- Maintenance along trails (unsafe roots, greenery) (10)
- More connecting paths/loops (4)
- More/safer sidewalks (3)
- Wayfinding for the trails (2)
- Access to trails (2)
- More crosswalks (2)

Park Improvements (19 comments)

- Parking access at parks (7)
- Playground improvement (6)
- Options for young kids (3)
- More trees (3)

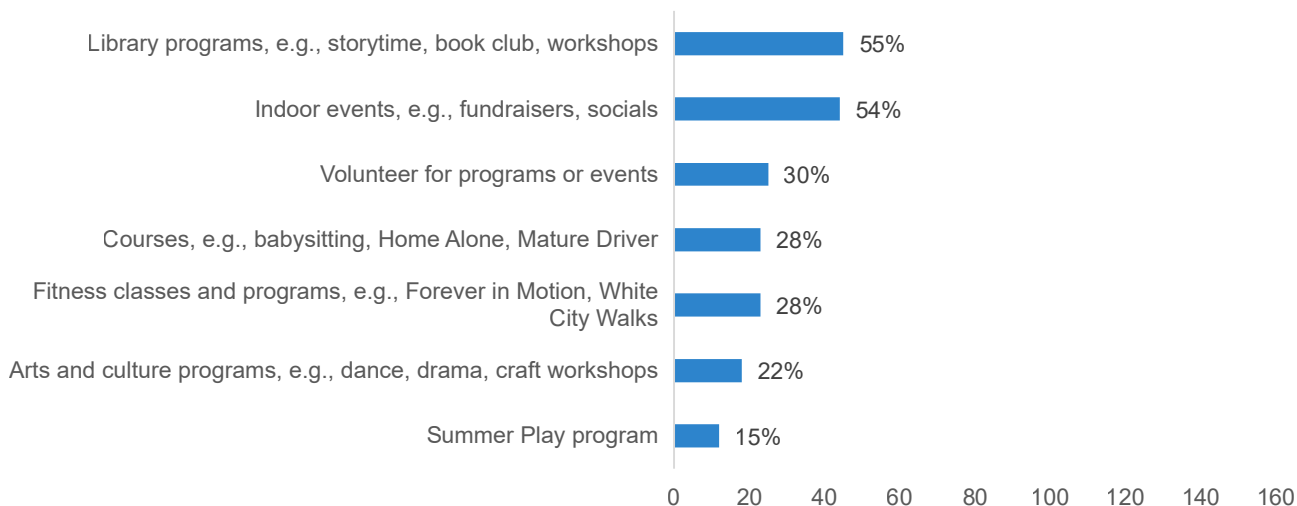
Other (6 comments)

- No improvements needed (2)
- No awareness of opportunities (2)
- Indoor swimming pool (2)

Recreation Programs and Events

Participation in Indoor Programs and Events

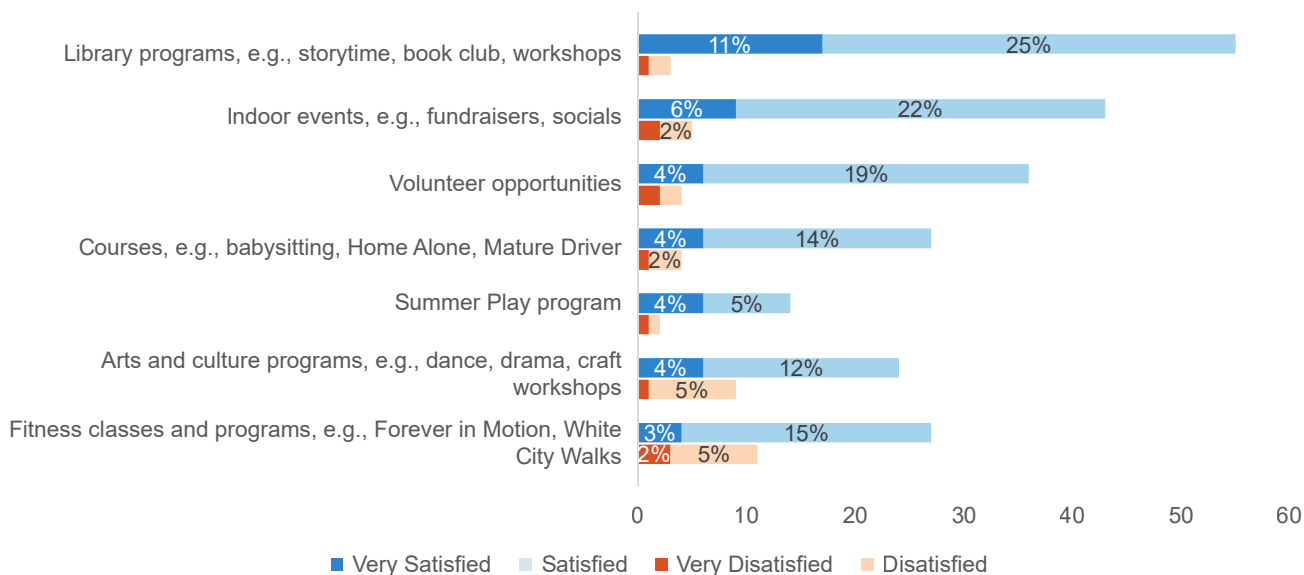
In a typical year, do you participate in the following indoor programs or events in White City (not including closures due to COVID-19)?



Total responses: 82

Satisfaction

What is your level of satisfaction or dissatisfaction with the following programs and events in White City?



Total responses: 155

Recreation Programs and Events Key Themes

There were 16 additional comments about programs and events. The following are the comments by more than one person organized by topic. Numbers in brackets reflect the number of people that made comments about the same theme. Themes raised by one single person can be found in Appendix A

Better Communications (7 comments)

- No awareness of the programs (7)

Program Options (4 comments)

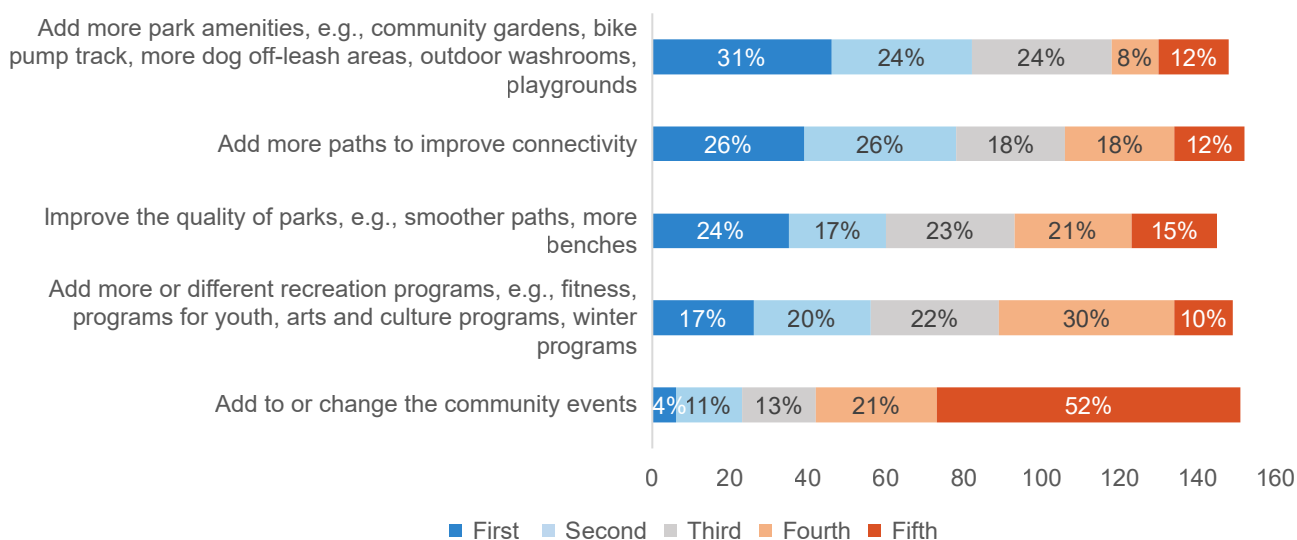
- More programs for adults/seniors (2)

Other (2 comments)

- Want more opportunities to volunteer (2)

Planning for the Future

Participants were asked to rank five broad ideas for improvements of parks and programs.



Total responses: 156

Ideas – Key Themes

Participants were asked if they had any ideas or specific suggestions for improving parks, trails, and recreation programs and events in White City.

There were 49 responses. The following are the comments by more than one person organized by topic. Numbers in brackets reflect the number of people that made comments about the same theme.

Parks and Trails (14 comments)

- Sidewalks/pedestrian paths (4)
- Dog park (3)
- Greenery maintenance (3)
- Connecting paths (2)
- More trees (2)

Outdoor Recreation (13 comments)

- Outdoor pool (8)
- Toboggan hill (3)
- Bike features (2)

Programming (11 comments)

- Options for kids (3)
- Options for teens (2)
- Crafts (2)
- More programs (2)
- Music lessons (2)

Indoor Recreation (4 comments)

- Indoor pool (2)
- Multi use centre (2)

Other (7 comments)

- Pool (5)
- Better communications of programs (2)

Final Comments

Participants were asked if they had any final comments to add. There were 64 responses to this question. The following are the comments by more than one person organized by topic. Numbers in brackets reflect the number of people that made comments about the same theme.

Indoor Recreation (19 comments)

- Indoor pool (8)
- Indoor rink (4)
- Indoor activity facility (3)
- Multiplex (2)
- Indoor track (2)

Outdoor Recreation (19 comments)

- Outdoor pool (11)
- Toboggan hill (3)
- Splashpad (2)

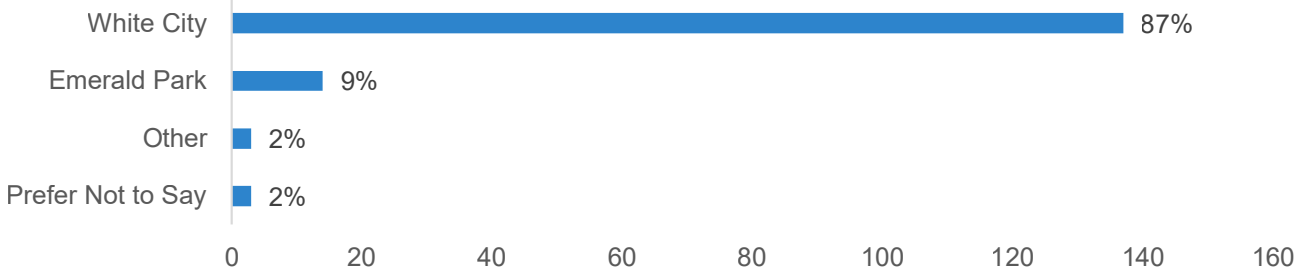
Comments for the City (16 comments)

- Doing great work already (6)
- Cost concerns about improvements (4)
- More engagement with community needed (2)
- Need better communications about programs (2)
- Love White City (2)

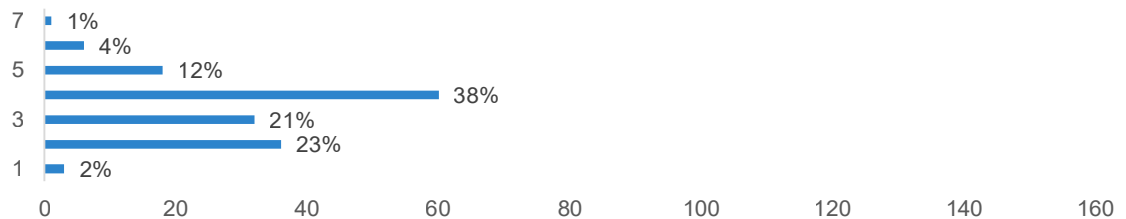
Parks and Trails (12 comments)

- Dog park (6)
- Parking at parks (2)
- More trails (2)
- More greenspace (2)

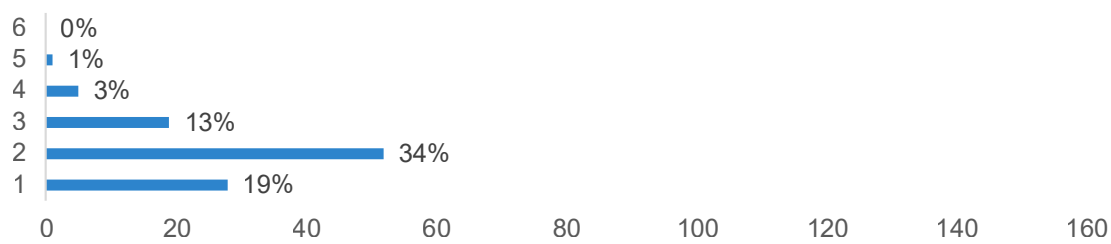
Where do you live?



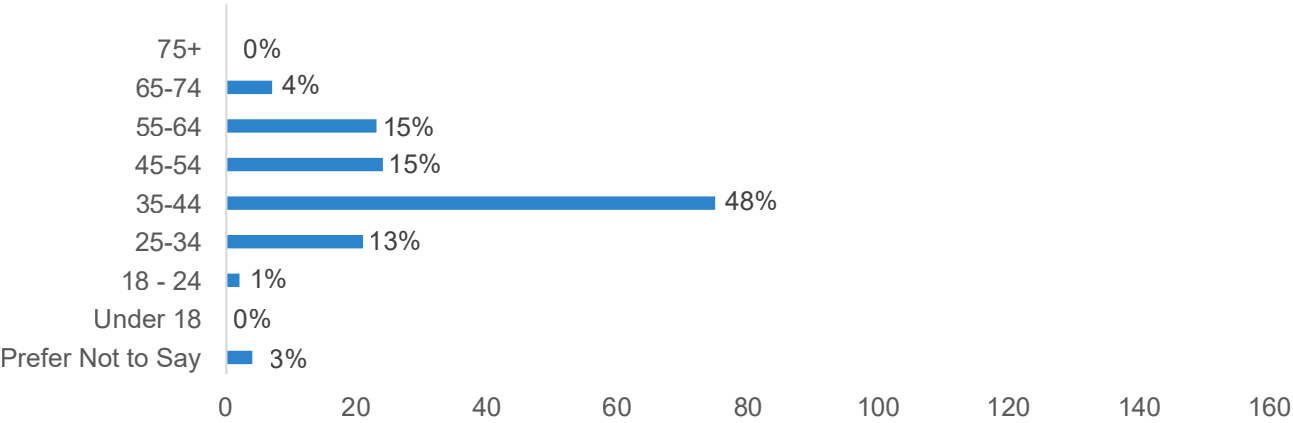
Including yourself, how many people live in your household?



How many people living in your household are under the age of 18?



Please indicate your age range



WORKSHOPS

In August, 2022, a number of interactive workshops were held using Zoom. The purpose of the workshops was to obtain input from stakeholders regarding the Town of White City's Parks and Recreation Master Plan. The workshops began with introductions and a short presentation on the context, content, and planning process of the master plan. The consultants recorded all input on a Mural board that was shared so the participants could view it.

The following is a record of the workshop input, including strengths, challenges, vision, and ideas generated by each group.

Mayor, Council and Staff Focus Group

August 3rd, 2022 at 3:30pm (PDT)

9 Participants

Strengths

Parks and Trails

- walking trails
- splash park
- lots of green space
- connectivity of trails
- ball diamonds
- outdoor rink
- relatively high use
- garbage bins, benches, dog bags, BBQs
- pickleball courts well used
- ski trails in White Butte near town

Recreation Programs and Events

- summer play program
- summer program is popular – wait list
- well attended winter and summer festivals
- slopitch league very popular

Challenges

Parks and Trails

- lacking more amenities in the larger parks – community park
- clarify if we need a dog off-leash area
- lots of the green space isn't usable – uneven ground
- need more outdoor washrooms
- good soccer field is in Emerald Park, need more soccer here too
- quality of some fields – not usable
- roots affecting paths
- need better washrooms, e.g., at trail staging areas, parking
- lacking local ball diamonds
- local developer thinks back yards make up for parks
- parking - for parks and events

Recreation Programs and Events

- not enough programs for teens
- engaging youth to find out what they want
- seniors programs
- severely lacking hockey rinks
- engaging with business partners who could offer some recreation
- not sure if events are meeting community needs
- doesn't matter who is offering an amenity (White City or Emerald Park)
- park in new Town Centre may include some of this
- parking – for parks and events
- challenges due to growth rate – hard to keep up with the demand
- weather is a challenge – activities limited by wind, etc. – lacking indoor facilities
- winter!!
- lacking volunteers

Vision

- aspirational
- encourage use
- multi-purpose
- multi-seasonal
- diverse
- connected and engaged community
- town values
- enhance growth of community organizations
- enhance volunteerism
- identity
- meet needs of youth
- recreation experiences that contribute to health and well-being
- places for families
- sense of ownership

Ideas

Parks and Trails

- soccer fields
- cross country ski trails
- toboggan hill
- mountain bike trails?
- ball diamonds
- place for ATVs, sleds, etc. – summer/winter
- pump track?
- standards for infrastructure, e.g., bench, garbage can

Recreation Programs and Events

- do followup surveys after events to get input
- build partnerships with clubs and groups, e.g., seed money
- more cultural programming
- year round facilities and activities

Public

August 8th, 2022 at 4:00pm (PDT)

5 Participants

Strengths

Parks and Trails

- interconnected trails (bike and running paths)
- Town has a lot to offer re parks, nothing is lacking
- trail installed by the Museum group, with interpretive information
- pickle ball has taken off (there is a league)
- have a significant amount of green space in older part of the Town
- there are a lot of ball teams (various ages)
- Emerald Park off leash dog park can be used
- larger parks in north part of town

Recreation Programs and Events

- public library has a variety of programs for all ages – babies to seniors
- programs are appreciated and well attended – sometimes at or over capacity
- Town gives a lot of support to the library (funding, staff, hours)
- new library is being planned
- story walks (Library event)

Challenges

Parks and Trails

- south of Lot Road there is a lot of open space that could be used
- lots of parks are just for the neighbours around
- there are a lot of small parks – lack of big open spaces for people to congregate
- newer areas don't have as much green space
- would like more green space
- are there enough ball diamonds?
- the town's gateway entrance is plain

Recreation Programs and Events

- library is too small to serve community re programming and resources
- serves the surrounding area too – space is too small
- library is 1400 sf, 5000 would be better
- people go to Regina for indoor sports

Vision

- something for people that don't like sports
- Town vision statement
- diversity of recreation opportunities vs only sports
- more types of sports (beyond soccer and hockey)
- options for people with disabilities

Ideas

Parks and Trails

- more family-oriented parks for the community (vs sports oriented)
- green space or trails connecting to the library
- space for outdoor programming next to the library
- outdoor BBQ areas
- outdoor venue (theatre)
- disc golf course, at Serbu Park?
- may want to consider community gardens in developments with smaller lots

Recreation Programs and Events

- more library capacity
- more communication between all groups in the community
- meetings for collaboration

Other

- park along Lot Road was proposed as a potential location for disc golf (had a plan), included disc rentals at a corner store – cancelled due to objections of neighbours

Public

August 9th, 2022 at 11am and 2pm (PDT)

3 Participants

Strengths

Parks and Trails

- trail system
- poop and scoop stations
- lighting
- skate park
- pickleball
- updated splash park
- garden club work to beautify the trails

Recreation Programs and Events

- wide variety of summer programs for children
- summer festival
- baseball
- programs at the community centre (3rd party)
- online booking for Childrens Camp

Challenges

Parks and Trails

- dog parks
- expanding trail system (link to White Butte trails)
- more rinks
- (rinks - other areas)

Recreation Programs and Events

- more programming (children and retirees)
- pool (even outdoor) maybe in interim
- swimming lessons
- more access to ice time
- multi-age concurrent programs
- free ice time
- lacrosse
- girls sports

Other

- Some hits and dashes re traffic from Hwy 1

Vision

- accessible, inclusive, and safe recreational facilities and programming that support both the current and projected demographics
- base needs on Stats Can projections, including Emerald Park
- keep parks well maintained
- climate-change lens
- integrate services with the region

Ideas

Parks and Trails

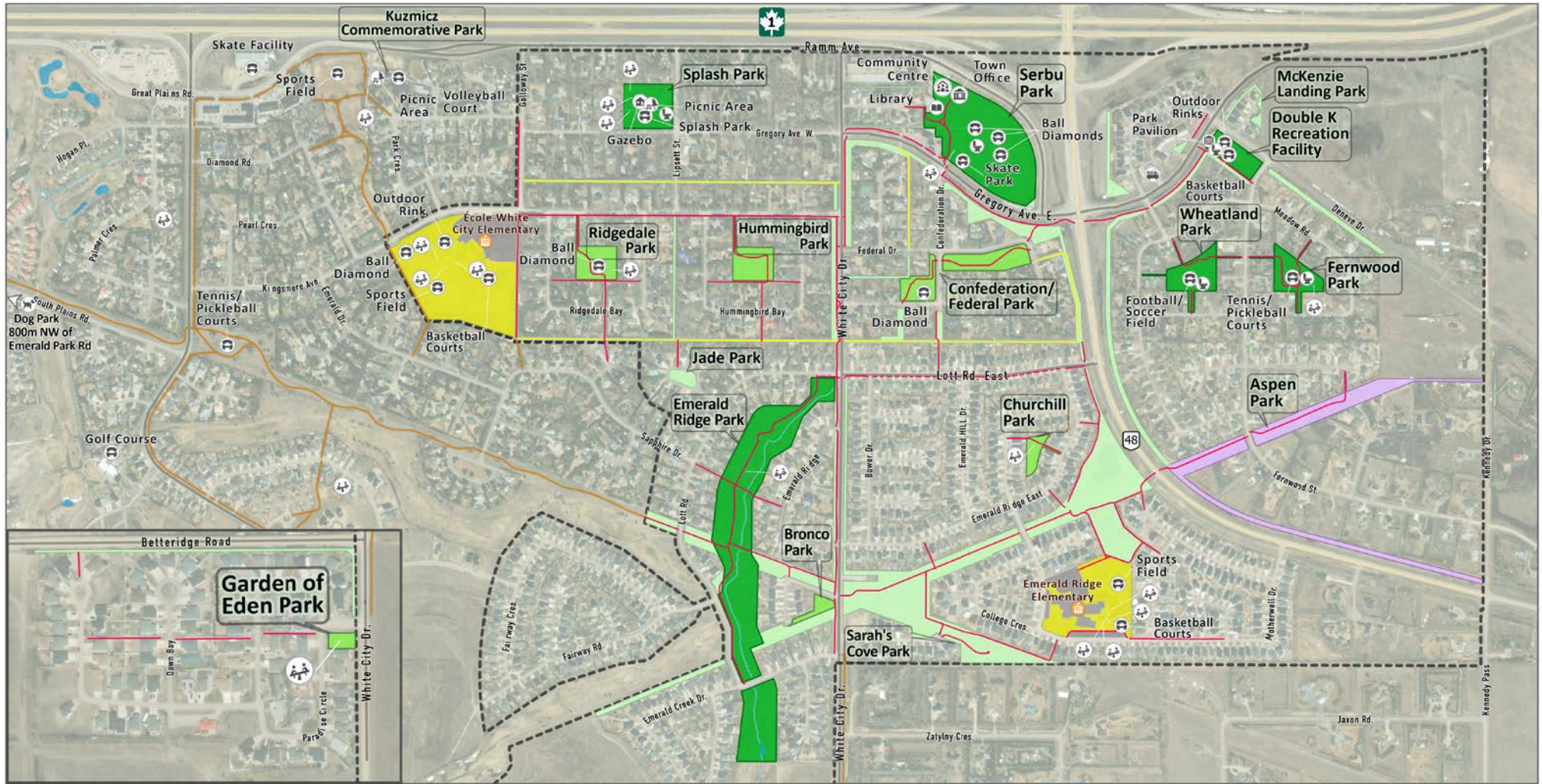
- off leash dog-park - nice one w trees, dog equipment
- extending the trail systems across the highway (complete with signage, lighting and amenities)
 - connect to White Butte trail system / Trans Canada Trail
- Interactive Map as part of the web-site (that shows amenities)
- more outdoor ice rink opportunities
- multi-purpose surfaces (for multiple sports)
- outdoor BBQ/ picnic tables (a la Wascana)
- more shade opportunities / cooling amenities
- natural areas for bird watching
- natural amphitheater
- slide Hill (by an outdoor rink)
- snowshoeing trial - was popular at an event
- look at more natural landscape (less water need)
- ice skating trails / skating oval
- corki curl
- multi-purpose courts

Recreation Programs and Events

- outdoor concerts
- farmers market (expand?)
- expanding programming available for young children
- make all registrations available online
- expand programming available for seniors (physical activities too)
- opportunity to expand winter recreation (invest in more programming)
- snowshoe rent free equipment
- promote all seasons activities

Other

- significant numbers of people do their recreation in Regina, e.g., fitness, drop-in programming, pool
- trying to deflect ATVs and snowmobiles in town - they are encourage to travel out of town on roads
- some parents come home from work, get kids and go back to Regina for programs. Many would prefer local options
- Town has done some trail grooming of trails in a park, was not used much (maybe people didn't know about it)
- cross-country ski trails at White Butte are great



URBAN
SYSTEMS

0 100 200 300
Metres

Coordinate System:
NAD 1983 CSRS UTM Zone 13N

Scale: 1:9,400
(When plotted at 11"x17")

Data Sources:

- Data provided by the Town of White City (2022), Urban Systems Ltd., and Esri.

The accuracy & completeness of information shown on this drawing is not guaranteed. It will be the responsibility of the user of the information shown on this drawing to locate & establish the precise location of all existing information whether shown or not.

Legend

- Town Boundary
- Watercourse
- Waterbody
- Playground
- Washroom
- Community Centre
- Public Library
- Recreation Facility

- Park Pavilion
- Picnic Area
- Gazebo
- Town Office
- Fire Hall
- Dog Park
- Elementary School

- Existing Trail
- On-Lane Route
- RM of Edenwold Trail
- School Building
- School Grounds

Parks

- Community Park
- Neighbourhood Park
- Linear Park
- Open Space

Project #: 3576.0001.01
Author: BA
Checked: BM
Status: Final
Revision: A
Date: 2023/10/4



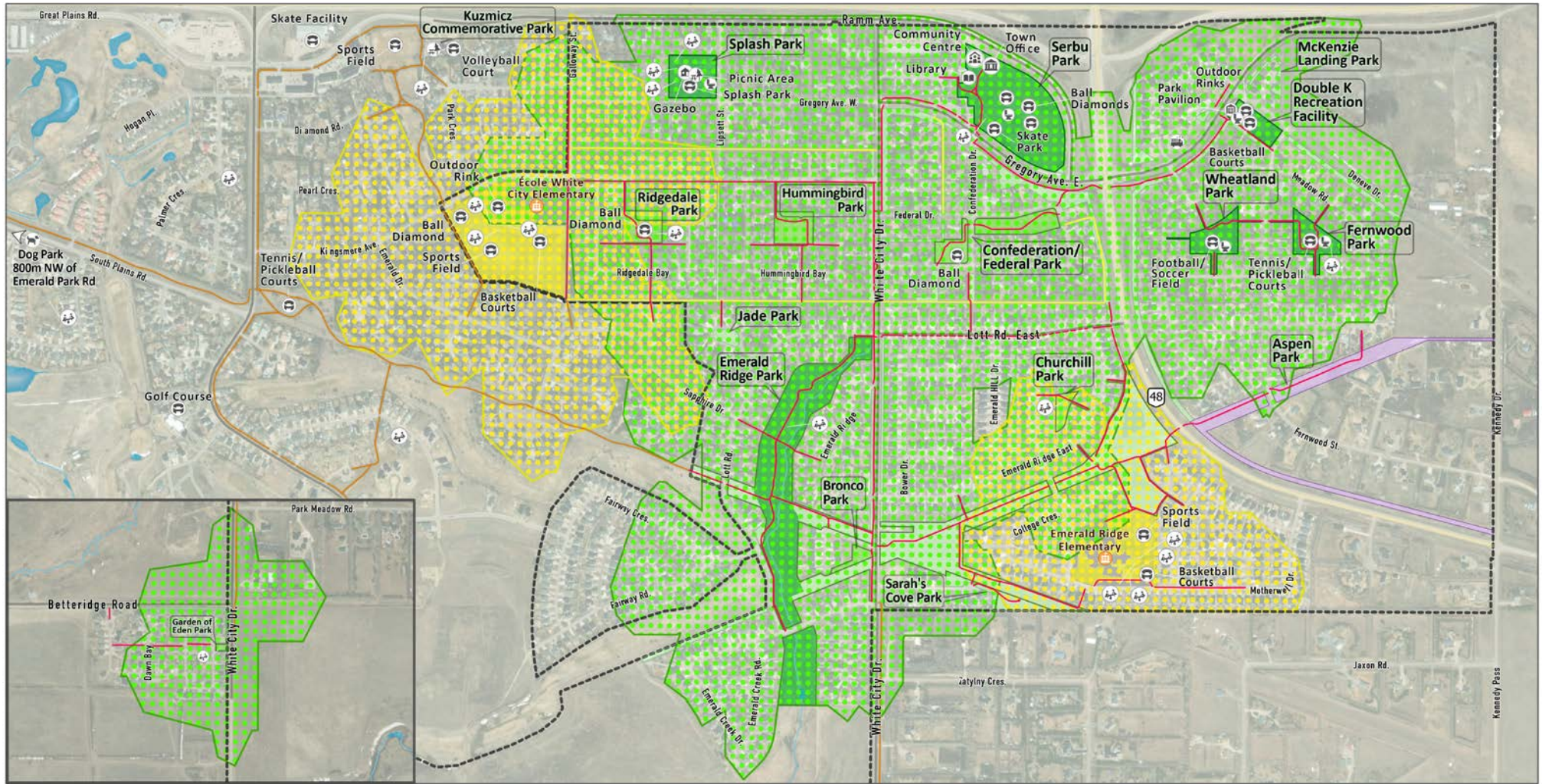
Town of
White City, SK

Parks and Recreation Master Plan

Map 1

Existing Parks and Trails

This page is left intentionally blank



URBAN
SYSTEMS

0 100 200 300
Metres

Coordinate System:
NAD 1983 CSRS UTM Zone 13N

Scale: 1:9,800
(When plotted at 11"x17")

Data Sources:

- Data provided by the Town of White City (2022), Urban Systems Ltd., and Esri.

The accuracy & completeness of information shown on this drawing is not guaranteed. It will be the responsibility of the user of the information shown on this drawing to locate & establish the precise location of all existing information whether shown or not.

Legend

- Town Boundary
- Watercourse
- Waterbody
- Playground
- Washroom
- Recreation Facility

- Community Centre
- Public Library
- Park Pavilion
- Picnic Area
- Town Office
- Gazebo
- Fire Hall

- Elementary School
- Existing Trail
- On-Lane Route
- RM of Edenwold Trail
- School Building
- School Grounds
- Community Park

- Neighbourhood Park
- Linear Park
- Open Space
- 5-Minute Walking Distance
- to Park
- to School



Town of
White City, SK

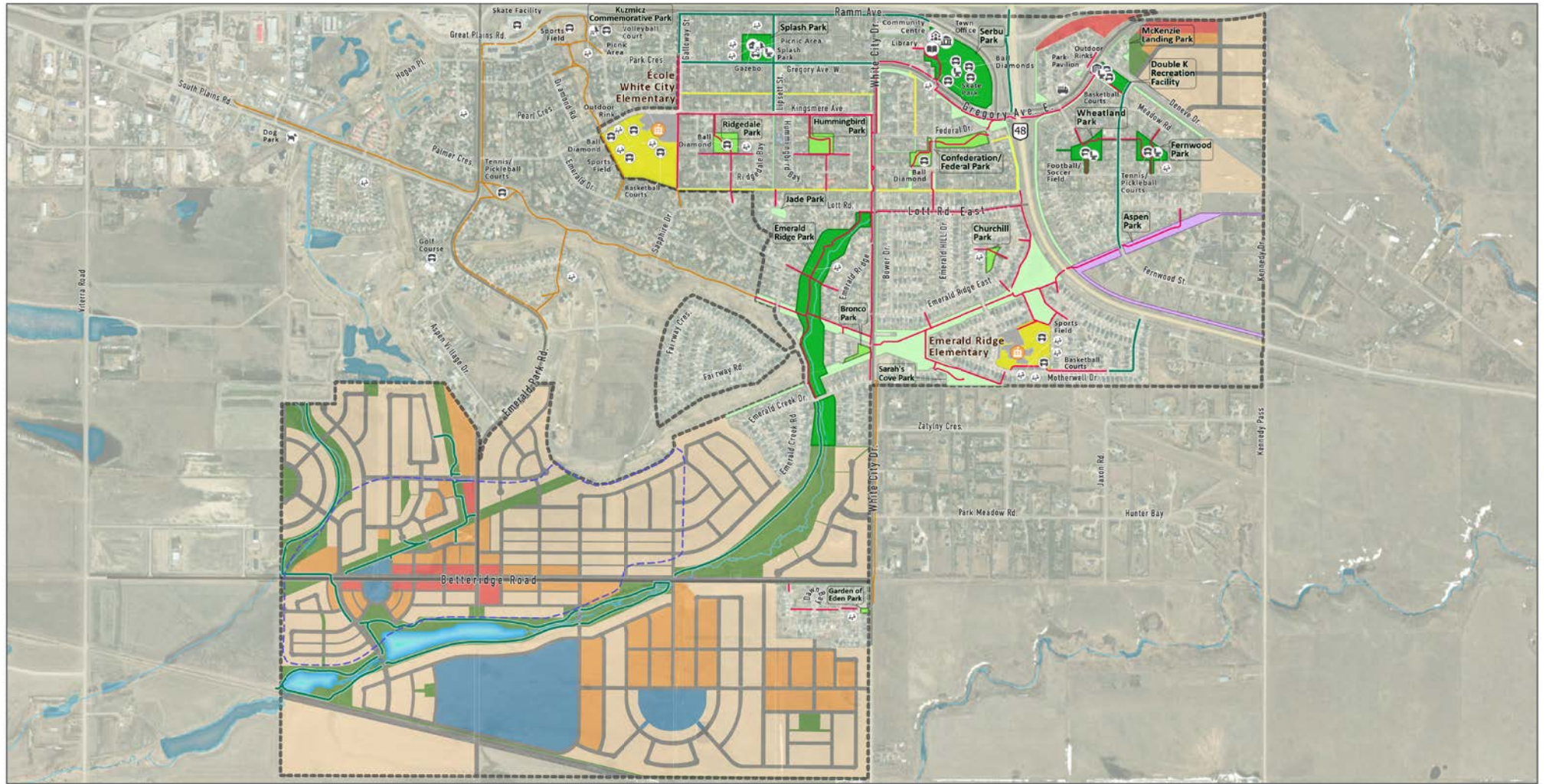
Parks and Recreation Master Plan

Map 2

Spatial Distribution Analysis

Project #: 3576.0001.01
Author: BA
Checked: BM
Status: Final
Revision: A
Date: 2023/10/4

This page is left intentionally blank



URBAN
SYSTEMS

0 100 200 300
Metres

Coordinate System:
NAD 1983 CSRS UTM Zone 13N

Scale: 1:15,500
(When plotted at 11"x17")

Data Sources:

- Data provided by the Town of White City (2022),
and Urban Systems Ltd. Imagery source: Esri.

The accuracy & completeness of information shown on this drawing is not
guaranteed. It will be the responsibility of the user of the information shown
on this drawing to locate & establish the precise location of all existing
information whether shown or not.

Legend

- Town Boundary
- Watercourse
- Waterbody
- Playground
- Washroom
- Community Centre
- Public Library
- Recreation Facility

- Park Pavilion
- Picnic Area
- Gazebo
- Town Office
- Fire Hall
- Dog Park
- Elementary School

- Proposed Trail
- Existing Trail
- On-Lane Route
- RM of Edenwold Trail
- School Building
- School Grounds
- Community Park
- Neighbourhood Park
- Linear Park
- Open Space

Future Land Use

- Town Centre
- Downtown Commercial
- High Density Residential
- Low Density Residential
- Municipal Service (Other)
- Recreation
- Transportation
- Lake



Town of
White City, SK

Parks and Recreation Master Plan

Map 3

**Existing and Proposed
Parks and Trails**

Project #: 3576.0001.01
Author: BA
Checked: BM
Status: Final
Revision: A
Date: 2023/10/4

Appendix B

IMPLEMENTATION TABLE

IMPLEMENTATION TABLE

The PRMP will be implemented in phases based on community needs, the pace of development, funding opportunities, and Council's priorities as all of those evolve over time. The PRMP is a guiding document for the provision of facilities and services; it does not commit the Town to any project nor limit future opportunities. Recommendations will need to be confirmed and implemented through capital funding, grants, development contributions, and effective partnerships on an ongoing basis. The most important guidance is provided by the vision and objectives, which should be used to guide future decisions.

The implementation table on the following pages identifies the priority, phasing, and relative costs associated with the recommendations. The phasing strategy is based on a balance of the following criteria, in no particular order, and these criteria may be used or adjusted in annual capital planning:

- Alignment with the vision and objectives of the PRMP
- Existing condition and needs for upgrading or replacement to improve safety or reduce risk of failure, e.g., asset is at or near end of lifecycle
- Addresses a gap, i.e., the facility or amenity does not exist
- Level of community support per master plan and ongoing input
- Number and diversity of people served, especially in terms of inclusivity
- Ability to support population growth
- Cost to build
- Resources for maintenance
- Opportunity to implement as part of an associated project
- Opportunity for funding and partnership

The PRMP focuses on high-level recommendations, recognizing that detailed budgets are compiled by Town staff during budgeting processes.

The capital projects may evolve and change based on community needs, the pace of development, funding opportunities, and Council's future priorities.

ONGOING	Tasks that are implemented over time as needed based on community interests, planning and development activities, grant opportunities, Council priorities, and other factors
QUICK WINS 0 – 2 YEARS	Investments that can reasonably be made within the first or second year of the PRMP, which generally include projects that are of highest priority as well as those that are lower cost and relatively easy to implement
SHORT-TERM IMPROVEMENTS 2 – 5 YEARS	Investments that can reasonably be made within the first five years of the PRMP, which generally include projects that are of second highest priority
MEDIUM-TERM IMPROVEMENTS 5 – 10 YEARS	Investments intended for the five- to ten-year timeframe, which generally include significant projects that may not reasonably be achieved within the first five years as well as those that are lower cost and relatively easy to implement but of a lower priority than those identified for the first five years
LONG-TERM IMPROVEMENTS OVER 10 YEARS	Investments that are intended for the long term and are likely beyond the life of the PRMP; they are identified for future and proactive planning and budgeting

Implementation Table (subject to change)

IMPLEMENTATION PLAN DRAFT		ON-GOING	QUICK WINS	PHASE 1	PHASE 2	PHASE 3
4.0 PARKS						
	LAND ACQUISITION					
P.1	Use the following guidelines for the acquisition and planning of parks in the new Town Centre.					
	PLANNING AND DESIGN					
P.2	Prepare a park plan for Serbu Park due to the number of new amenities proposed and the need for overall upgrading of this park.					
P.3	Use the following design guidelines in all park planning, design, and construction.					
	CAPITAL PROJECTS					
P.4	Upgrade existing parks with the following potential improvements and amenities:					
	Serbu Park					
	covered park pavilion					
	play equipment for different age bracket (ages 5-12) with natural/creative play environment					
	more picnic tables, BB Qs, and gathering spaces					
	bike skills park					
	perimeter trail					
	new batting cage and bleachers as needed					
	improve drainage					
	more trees and shrubs especially along highway					
	Splash Park					
	new play equipment to replace aging equipment					
	poured rubber surfacing in play area					
	permanent washroom					
	picnic shelter (to replace gazebo)					
	more picnic tables, BB Qs, and gathering spaces					
	improve drainage					
	Fernwood Park					
	• permanent washroom					
	Wheatland Park					
	• permanent washroom					
	Aspen Park					
	• option for off-leash dog area					
	Hummingbird Park					
	• playground					
	• seating and waste receptacles					

IMPLEMENTATION PLAN DRAFT		ON- GOING	QUICK WINS	PHASE 1	PHASE 2	PHASE 3
4.0 PARKS						
	CAPITAL PROJECTS					
	Emerald Ridge Park <ul style="list-style-type: none"> outdoor fitness equipment option of off-leash dog area permanent washroom 					
P.5	Establish an asset management cycle for replacement and upgrading of park amenities, including sports fields.					
P.6	Collaborate with Youth Advisory Committee to plan and include an amenity for the youth population. Some examples to consider disc golf, pump track, toboggan hill.					
P.7	Advocate to include the following amenities in the Town Centre:					
	premium soccer field and three additional fields					
	one premium ball diamond and three additional ball diamonds					
	playgrounds in community and neighbourhood parks, with one splash park, and two fully accessible					
	off-leash dog area					
	pickleball courts					
	outdoor rink with skating oval					
	skate park					
	bike pump track					
	toboggan hill					
P.8	Collaborate with Prairie Valley School Division #208 to irrigate the Emerald Ridge field.					
	SERVICE DELIVERY					
P.9	Obtain additional funds for operations and maintenance as new parks and amenities are developed.					
P.10	Increase the provision of waste receptacles in high-use parks and trails.					
P.11	Continue collaborating with organizations such as School Division #208, library, community groups, RM of Edenwold, and Emerald Park community to coordinate planning of parks, trails, amenities, and contiguous natural areas.					
P.12	Collaborate with Prairie Valley School Division #208, RM of Edenwold, and other regional partners on planning sports fields to most effectively support the region, e.g., carrying out the Emerald Ridge Elementary Grounds Development Plan.					

IMPLEMENTATION PLAN DRAFT		ON-GOING	QUICK WINS	PHASE 1	PHASE 2	PHASE 3
5.0 TRAILS						
	PLANNING AND DESIGN					
T.1	Design a signage system to include wayfinding, regulatory, and interpretive signs for parks, trails, and facilities.					
T.2	Prepare and adopt new design standards for trails.					
T.3	Name the key trails to assist with wayfinding.					
T.4	Use the following guidelines for the planning and design of trails in the new Town Centre.					
	CAPITAL PROJECTS					
T.5	Continue to develop pathways proposed in the Multi-Use Pathway Network Improvement Project.					
T.6	Add trail connections in the following locations:					
	along Gregory Avenue W, from the Splash Park to the east (connecting to Galloway St.) and west (connecting to White City Dr.)					
	along Lipsett St., from the Splash Park to the north (connecting to Ramm Ave.) and south (connecting to Kingsmere Ave.)					
	along Galloway St. connecting Gregory Ave. W to Ramm Ave.					
	along Fernwood Street connecting Double K Park to Aspen Park					
T.7	Construct signage system to include wayfinding, regulatory, and interpretive signs.					
T.8	Rebuild existing pathways that are cracking and heaving.					
	SERVICE DELIVERY					
T.9	Develop an “adopt a trail” program that involves community members, organizations, and businesses in keeping trails clean.					
6.0 PROGRAMS AND EVENTS						
PE.1	Based on the capacity of the Community Centre and staff resources, increase programs offered, directly or through partnerships, with a focus on fitness, arts and culture, seniors and youth, sports for girls, and multi-age concurrent programs with child care.					
PE.2	Develop an “adopt a trail” program that involves community members, organizations, and businesses in keeping trails clean.					
PE.3	Work with community volunteers to identify any supports or incentives that the Town could provide to encourage more volunteerism, e.g., list opportunities on website, appreciation events.					
PE.4	Provide more information on programs and events through multiple online and traditional channels.					
PE.5	Organize transportation for events to provide alternatives to driving, and alternate parking locations with shuttle services for those who drive.					

Footnotes:

- The Town has prepared concept plans for a usable space for an athletic field at Bower West Pond 2 (behind Emerald Ridge School) with the potential for a pocket park that includes seating and a playground

